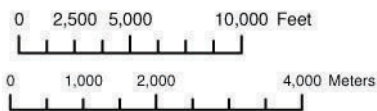
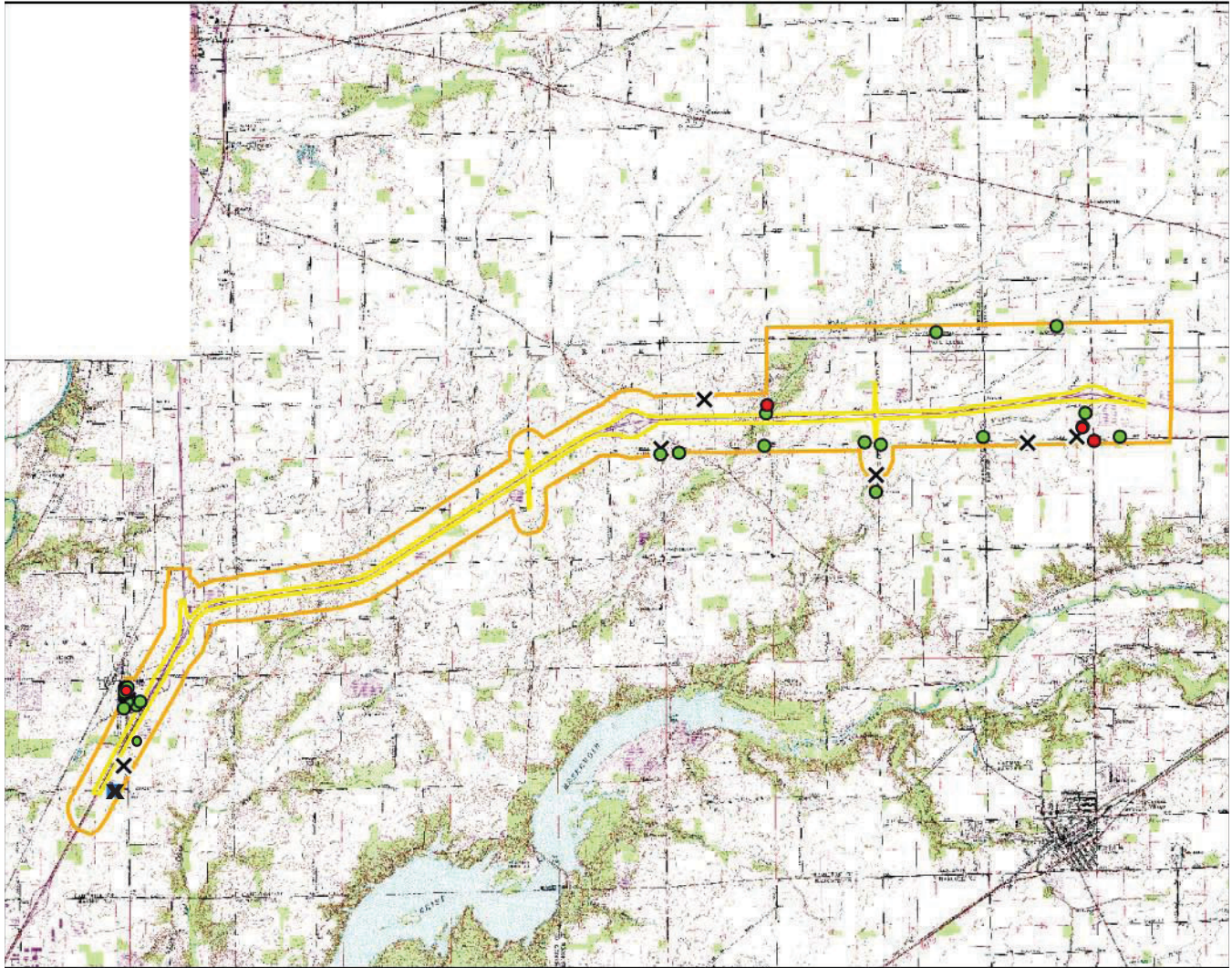


I-69 Added Travel Lanes from 106th Street to State Road 13  
 Delaware, Fall Creek, & Wayne Townships, Hamilton County, Indiana  
 Green Township, Madison County, Indiana  
 Des. Nos.: 1383332 & 1383336

Portion of the USGS 7.5' series McCordsville, Riverwood, Ingalls, Lapel, and Fishers, Indiana Topographic Quadrangle



April 15, 2014



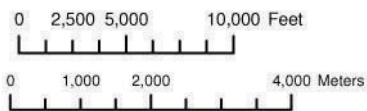
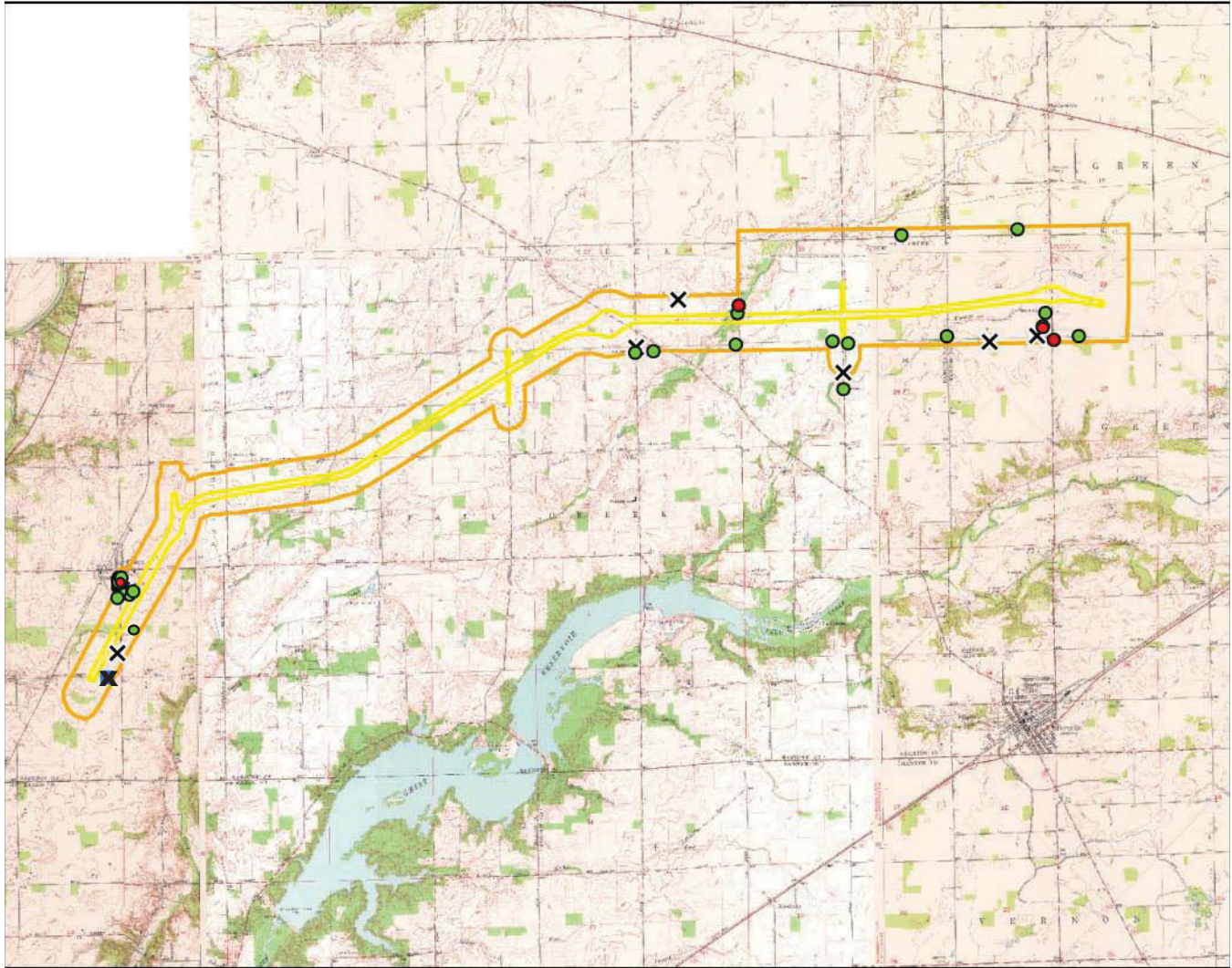
**WEINTRAUT & ASSOCIATES, INC.**

Note: Information shown on this map is not warranted for accuracy or merchantability. GIS data used to create this map are from the best known sources existing at this time. However, experience shows that many national datasets are not all inclusive. Use of this map should be limited to planning, and should not replace field review or background checks with other sources. It is intended to serve as an aid in graphic representation only. This map does not represent a legal document.

I-69 Added Travel Lanes from 106th Street to State Road 13  
 Delaware, Fall Creek, & Wayne Townships, Hamilton County, Indiana  
 Green Township, Madison County, Indiana  
 Des. Nos.: 1383332 & 1383336  
 Portion of the USGS 7.5' series McCordsville 1962, Riverwood1953, Ingalls1952, Lapel 1953,  
 and Fishers 1952, Indiana Topographic Quadrangle



April 15, 2014



	Project Location
	APE
	Previously Determined NRHP-Eligible
	NRHP-Eligible
	Contributing Property
	No Longer Extant



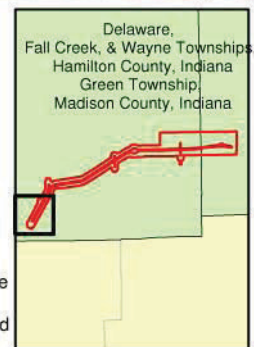
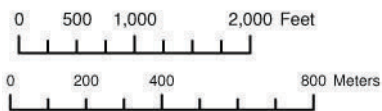
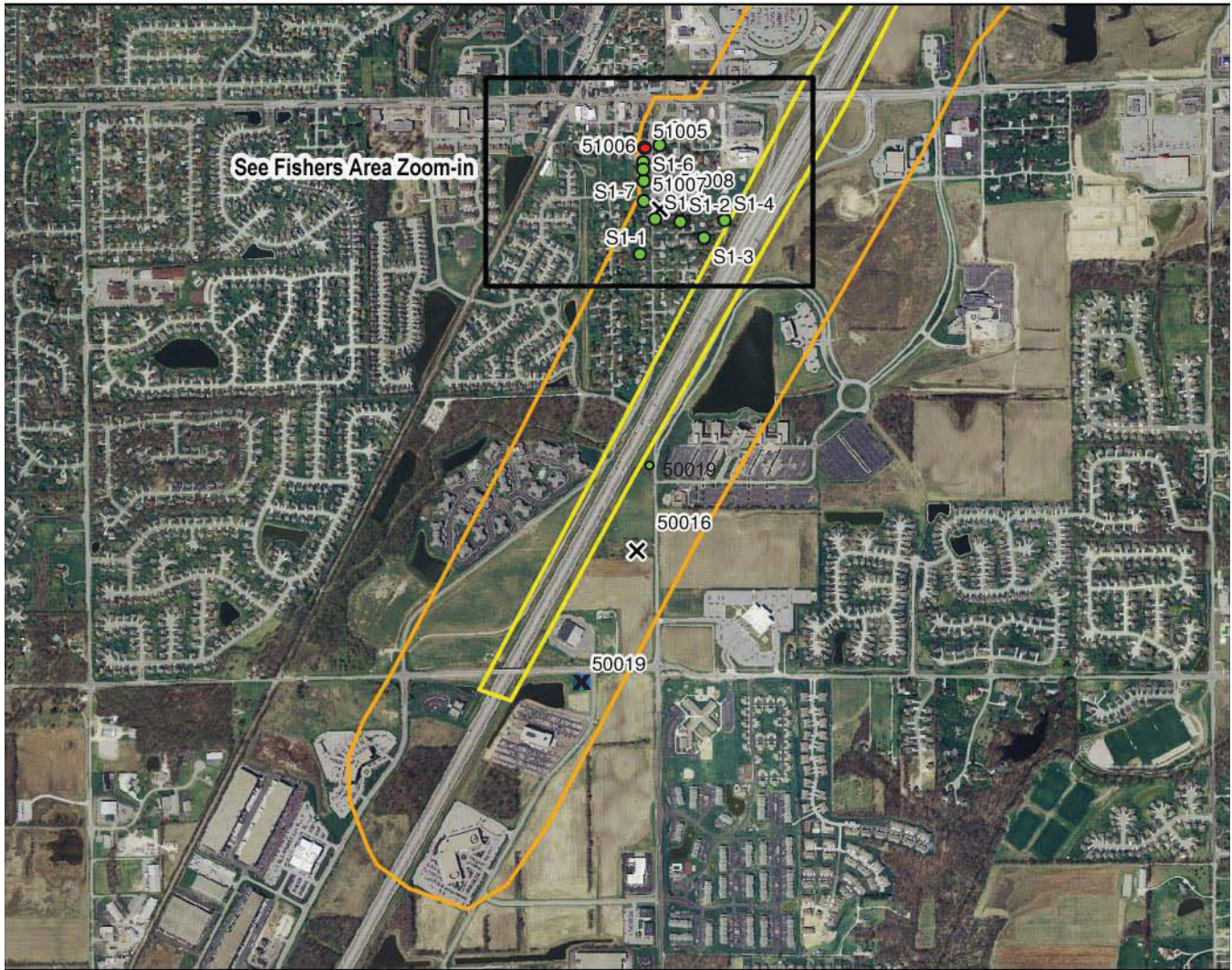
**WEINTRAUT & ASSOCIATES, INC.**

Note: Information shown on this map is not warranted for accuracy or merchantability. GIS data used to create this map are from the best known sources existing at this time. However, experience shows that many national datasets are not all inclusive. Use of this map should be limited to planning, and should not replace field review or background checks with other sources. It is intended to serve as an aid in graphic representation only. This map does not represent a legal document.

WEINTRAUT & ASSOCIATES, INC.



April 18, 2014

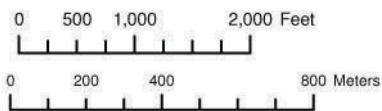
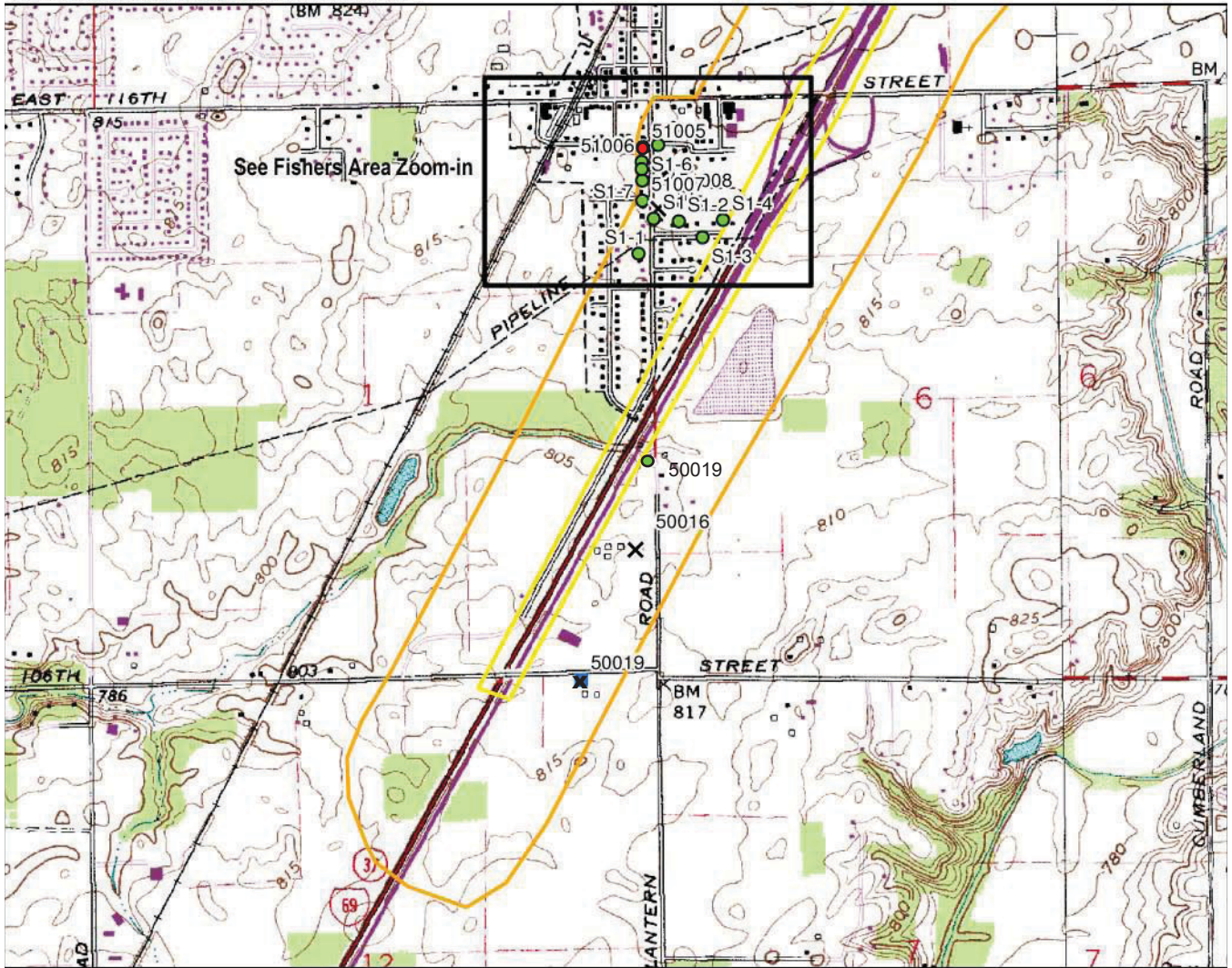


**WEINTRAUT & ASSOCIATES, INC.**

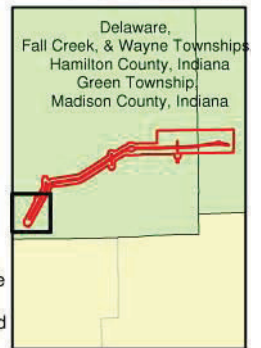
Note: Information shown on this map is not warranted for accuracy or merchantability. GIS data used to create this map are from the best known sources existing at this time. However, experience shows that many national datasets are not all inclusive. Use of this map should be limited to planning, and should not replace field review or background checks with other sources. It is intended to serve as an aid in graphic representation only. This map does not represent a legal document.

I-69 Added Travel Lanes from 106th Street to State Road 13: Zoom-in Map 1  
 Delaware, Fall Creek, & Wayne Townships, Hamilton County, Indiana  
 Green Township, Madison County, Indiana  
 Des. Nos.: 1383332 & 1383336  
 Portion of the USGS 7.5' series McCordsville, Riverwood, Ingalls, Lapel,  
 and Fishers, Indiana Topographic Quadrangle

  
 April 18, 2014



	Project Location
	APE
	Previously Determined NRHP-Eligible
	NRHP-Eligible
	Contributing Property
	No Longer Extant



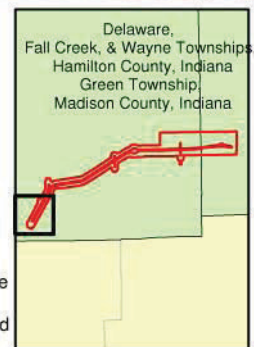
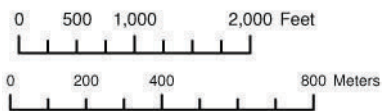
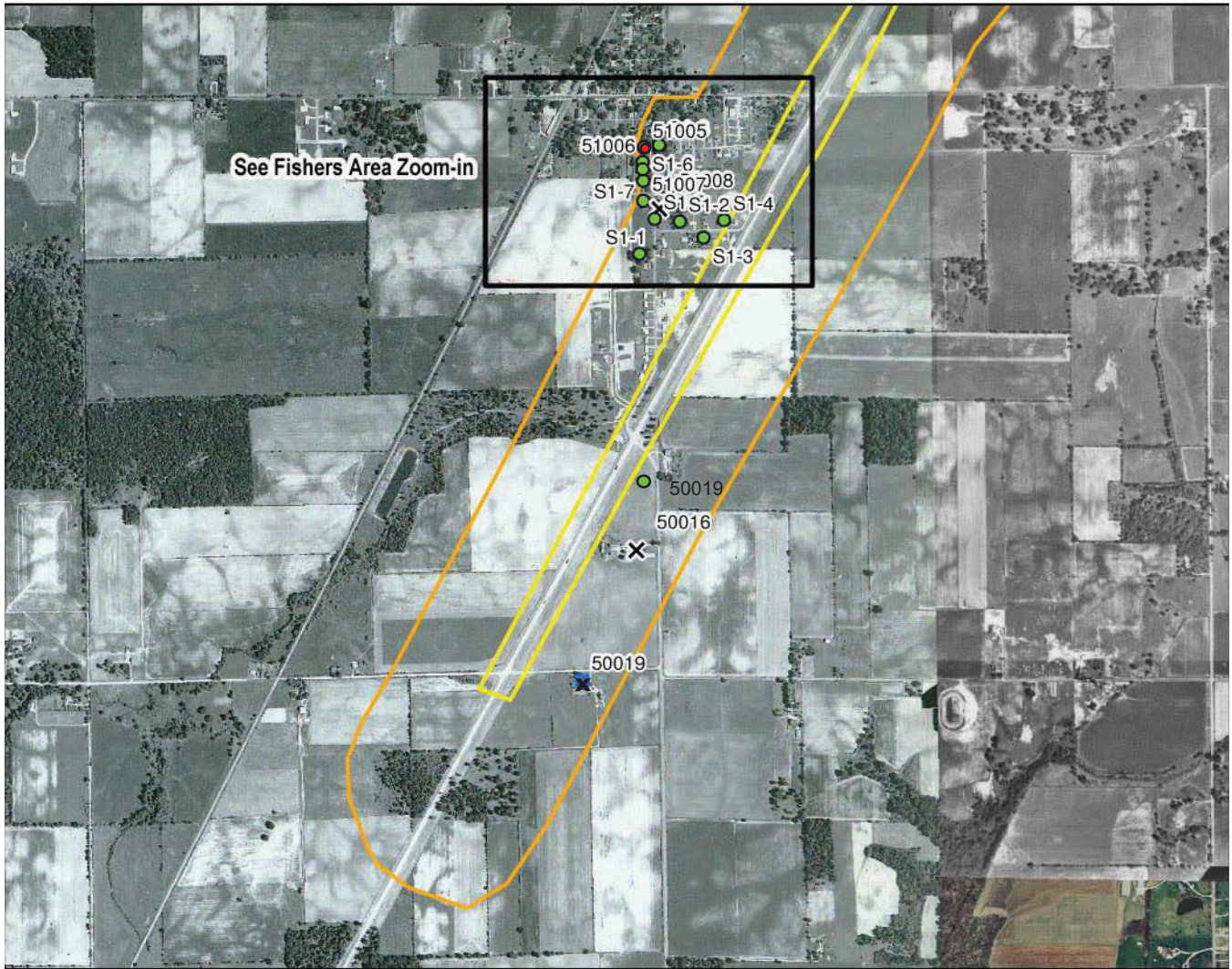
**WEINTRAUT & ASSOCIATES, INC.**

Note: Information shown on this map is not warranted for accuracy or merchantability. GIS data used to create this map are from the best known sources existing at this time. However, experience shows that many national datasets are not all inclusive. Use of this map should be limited to planning, and should not replace field review or background checks with other sources. It is intended to serve as an aid in graphic representation only. This map does not represent a legal document.

WEINTRAUT & ASSOCIATES, INC.



April 18, 2014



**WEINTRAUT & ASSOCIATES, INC.**

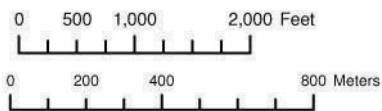
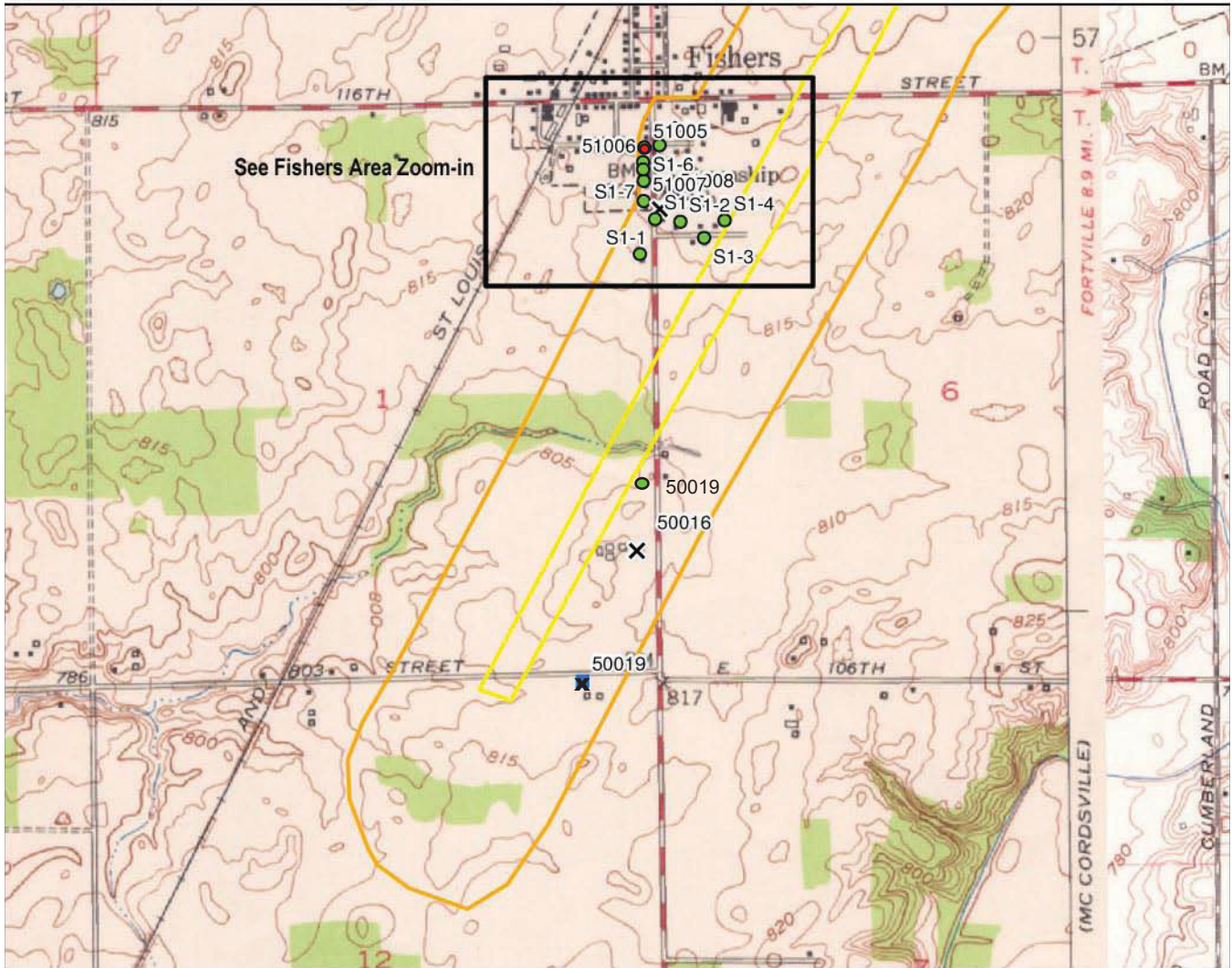
Note: Information shown on this map is not warranted for accuracy or merchantability. GIS data used to create this map are from the best known sources existing at this time. However, experience shows that many national datasets are not all inclusive. Use of this map should be limited to planning, and should not replace field review or background checks with other sources. It is intended to serve as an aid in graphic representation only. This map does not represent a legal document.

WEINTRAUT & ASSOCIATES, INC.

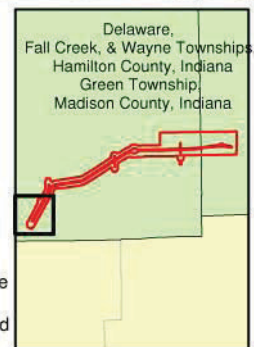
I-69 Added Travel Lanes from 106th Street to State Road 13: Zoom-in Map 1  
 Delaware, Fall Creek, & Wayne Townships, Hamilton County, Indiana  
 Green Township, Madison County, Indiana  
 Des. Nos.: 1383332 & 1383336  
 Portion of the USGS 7.5' series McCordsville 1962, Riverwood 1953, Ingalls 1952, Lapel 1953,  
 and Fishers 1952, Indiana Topographic Quadrangle



April 18, 2014



	Project Location
	APE
	Previously Determined NRHP-Eligible
	NRHP-Eligible
	Contributing Property
	No Longer Extant



**WEINTRAUT & ASSOCIATES, INC.**

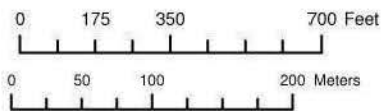
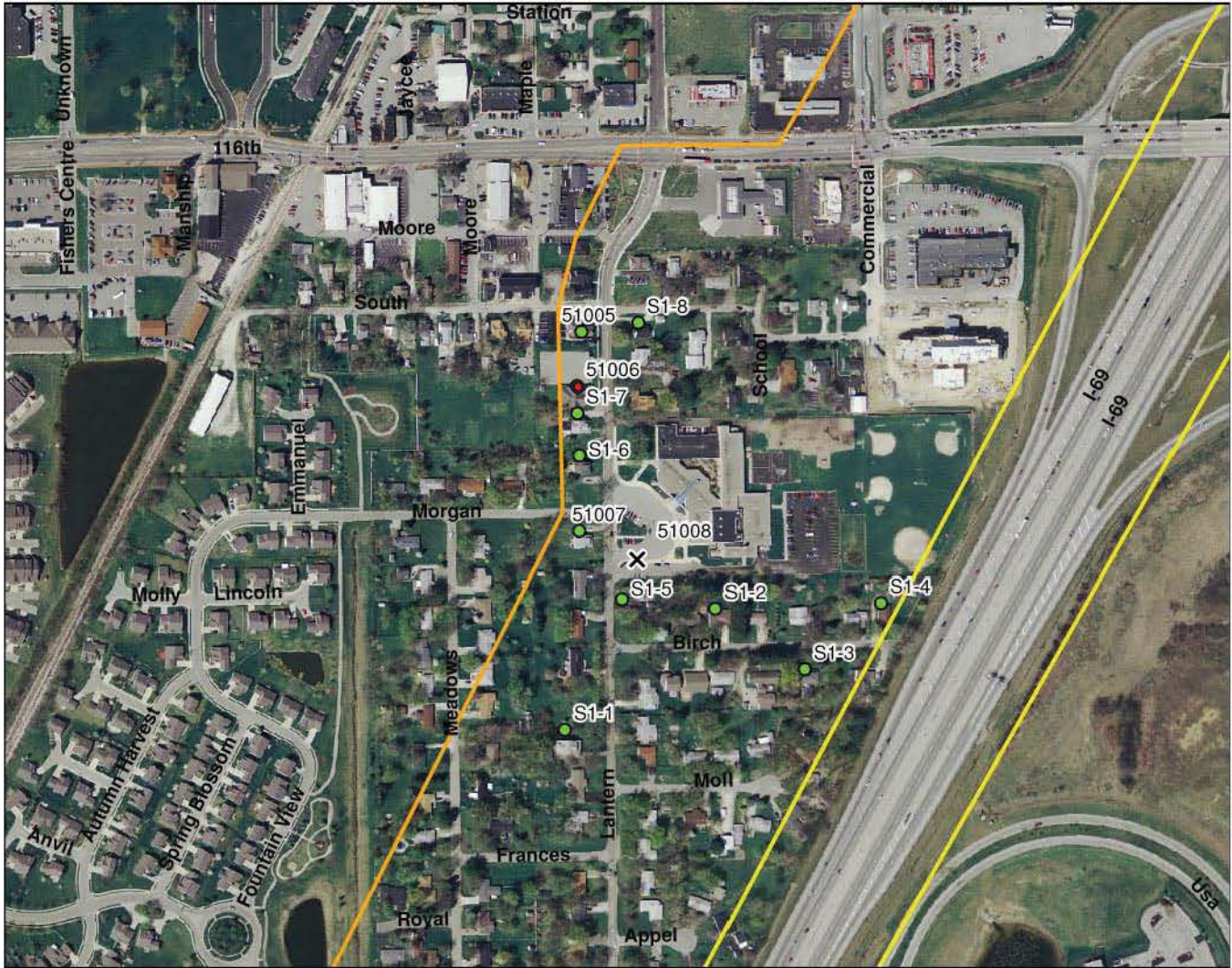
Note: Information shown on this map is not warranted for accuracy or merchantability. GIS data used to create this map are from the best known sources existing at this time. However, experience shows that many national datasets are not all inclusive. Use of this map should be limited to planning, and should not replace field review or background checks with other sources. It is intended to serve as an aid in graphic representation only. This map does not represent a legal document.

WEINTRAUT & ASSOCIATES, INC.

I-69 Added Travel Lanes from 106th Street to State Road 13: Fishers Area Zoom-in  
 Delaware, Fall Creek, & Wayne Townships, Hamilton County, Indiana  
 Green Township, Madison County, Indiana  
 Des. Nos.: 1383332 & 1383336  
 2005 Aerial Photo



April 18, 2014



	Project Location
	APE
	Previously Determined NRHP-Eligible
	NRHP-Eligible
	Contributing Property
	No Longer Extant



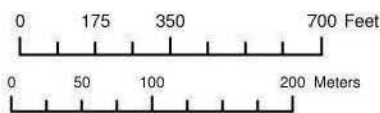
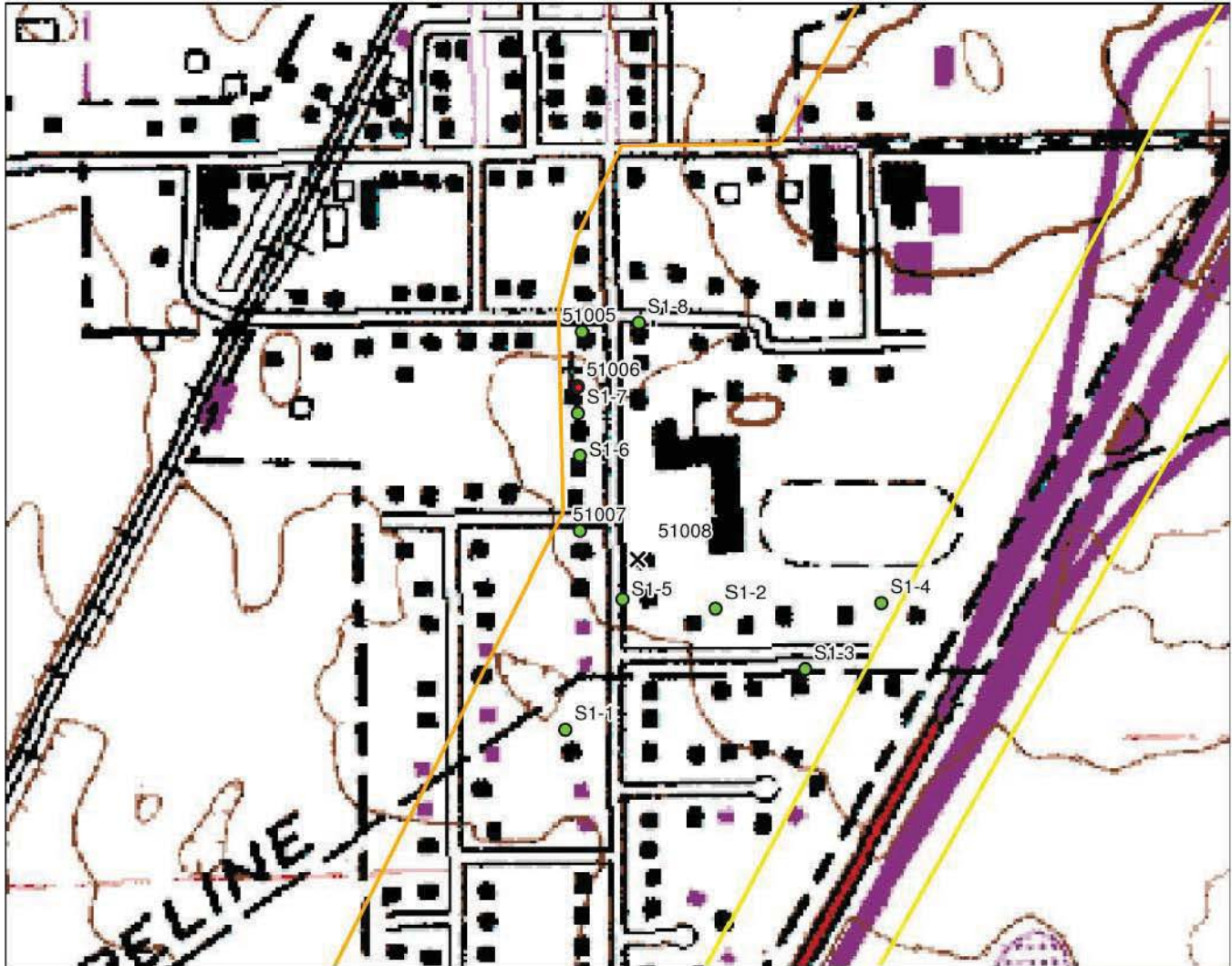
**WEINTRAUT & ASSOCIATES, INC.**

Note: Information shown on this map is not warranted for accuracy or merchantability. GIS data used to create this map are from the best known sources existing at this time. However, experience shows that many national datasets are not all inclusive. Use of this map should be limited to planning, and should not replace field review or background checks with other sources. It is intended to serve as an aid in graphic representation only. This map does not represent a legal document.

I-69 Added Travel Lanes from 106th Street to State Road 13: Fishers Area Zoom-in  
 Delaware, Fall Creek, & Wayne Townships, Hamilton County, Indiana  
 Green Township, Madison County, Indiana  
 Des. Nos.: 1383332 & 1383336  
 Portion of the USGS 7.5' series McCordsville, Riverwood, Ingalls, Lapel,  
 and Fishers, Indiana Topographic Quadrangle



April 18, 2014



	Project Location
	APE
	Previously Determined NRHP-Eligible
	NRHP-Eligible
	Contributing Property
	No Longer Extant

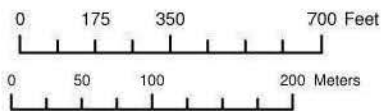


**WEINTRAUT & ASSOCIATES, INC.**

Note: Information shown on this map is not warranted for accuracy or merchantability. GIS data used to create this map are from the best known sources existing at this time. However, experience shows that many national datasets are not all inclusive. Use of this map should be limited to planning, and should not replace field review or background checks with other sources. It is intended to serve as an aid in graphic representation only. This map does not represent a legal document.



April 18, 2014



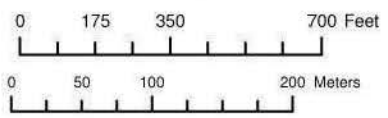
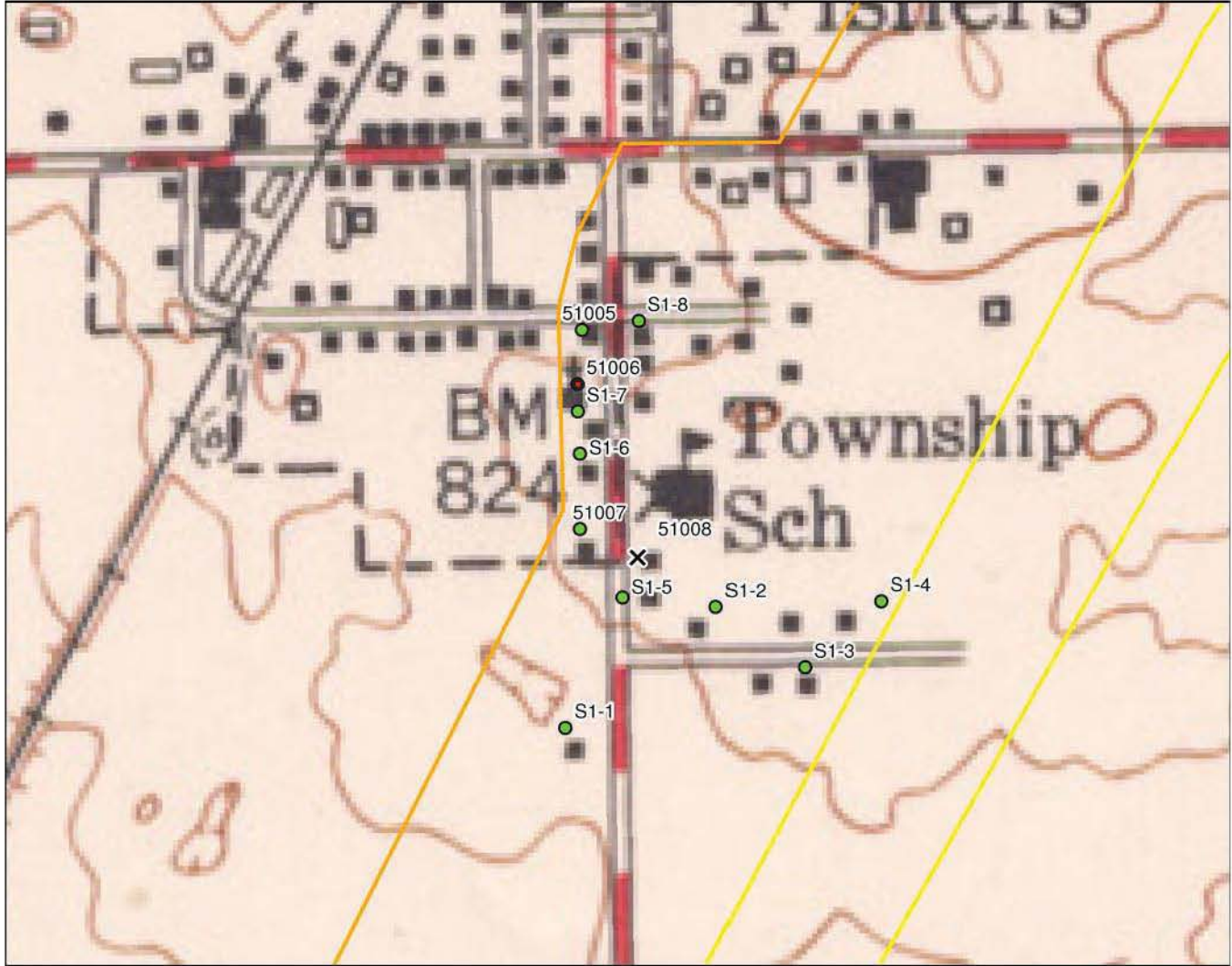
**WEINTRAUT & ASSOCIATES, INC.**

Note: Information shown on this map is not warranted for accuracy or merchantability. GIS data used to create this map are from the best known sources existing at this time. However, experience shows that many national datasets are not all inclusive. Use of this map should be limited to planning, and should not replace field review or background checks with other sources. It is intended to serve as an aid in graphic representation only. This map does not represent a legal document.

I-69 Added Travel Lanes from 106th Street to State Road 13: Fishers Area Zoom-in  
 Delaware, Fall Creek, & Wayne Townships, Hamilton County, Indiana  
 Green Township, Madison County, Indiana  
 Des. Nos.: 1383332 & 1383336  
 Portion of the USGS 7.5' series McCordsville 1962, Riverwood 1953, Ingalls 1952, Lapel 1953,  
 and Fishers 1952, Indiana Topographic Quadrangle



April 18, 2014



	Project Location
	APE
	Previously Determined NRHP-Eligible
	NRHP-Eligible
	Contributing Property
	No Longer Extant



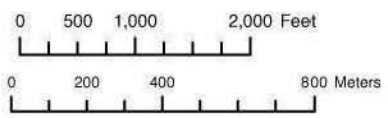
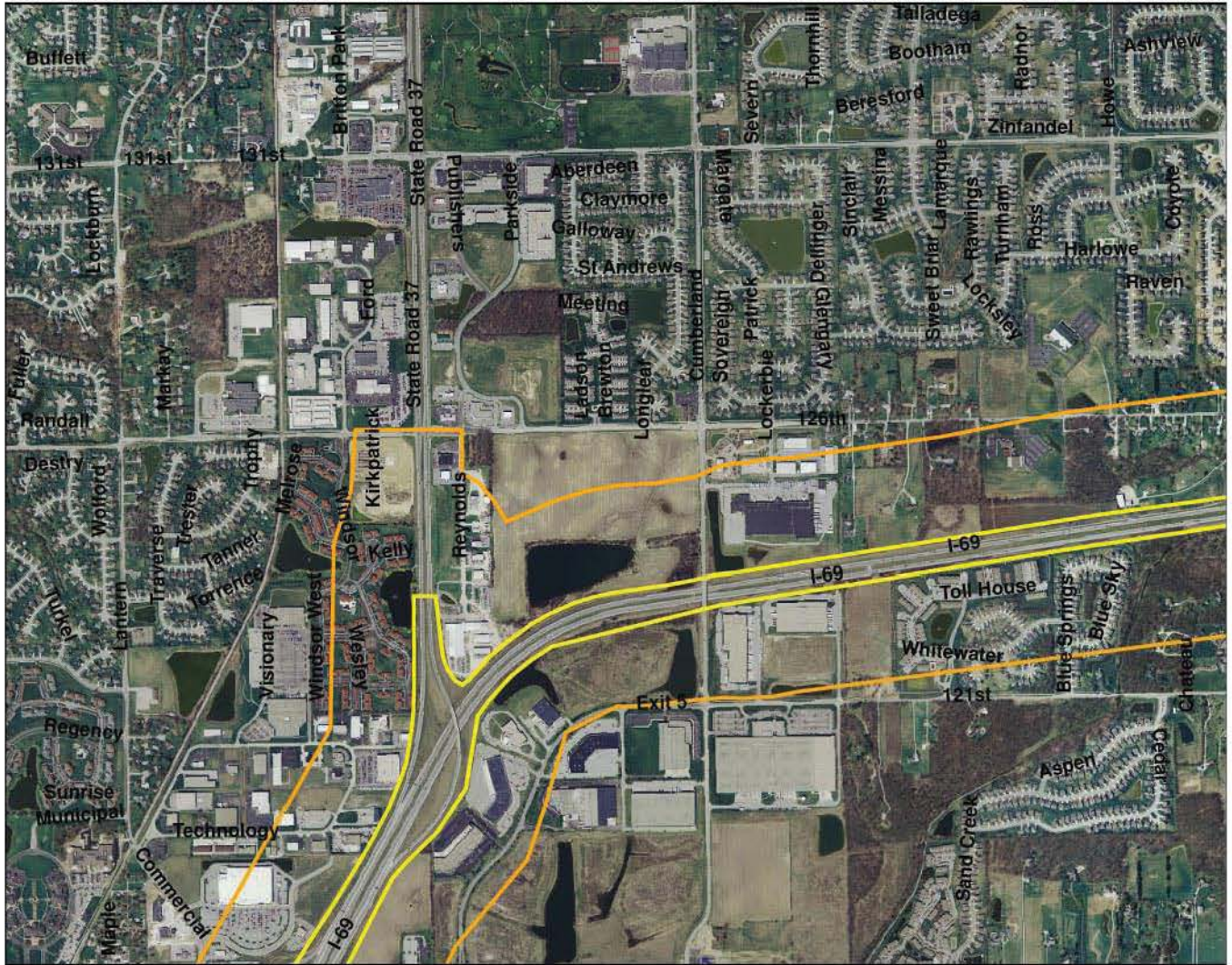
**WEINTRAUT & ASSOCIATES, INC.**

Note: Information shown on this map is not warranted for accuracy or merchantability. GIS data used to create this map are from the best known sources existing at this time. However, experience shows that many national datasets are not all inclusive. Use of this map should be limited to planning, and should not replace field review or background checks with other sources. It is intended to serve as an aid in graphic representation only. This map does not represent a legal document.

I-69 Added Travel Lanes from 106th Street to State Road 13: Zoom-in Map 2  
 Delaware, Fall Creek, & Wayne Townships, Hamilton County, Indiana  
 Green Township, Madison County, Indiana  
 Des. Nos.: 1383332 & 1383336  
 2005 Aerial Photo



April 18, 2014



	Project Location
	APE
	Previously Determined NRHP-Eligible
	NRHP-Eligible
	Contributing Property
	No Longer Extant



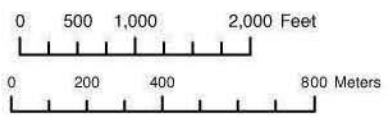
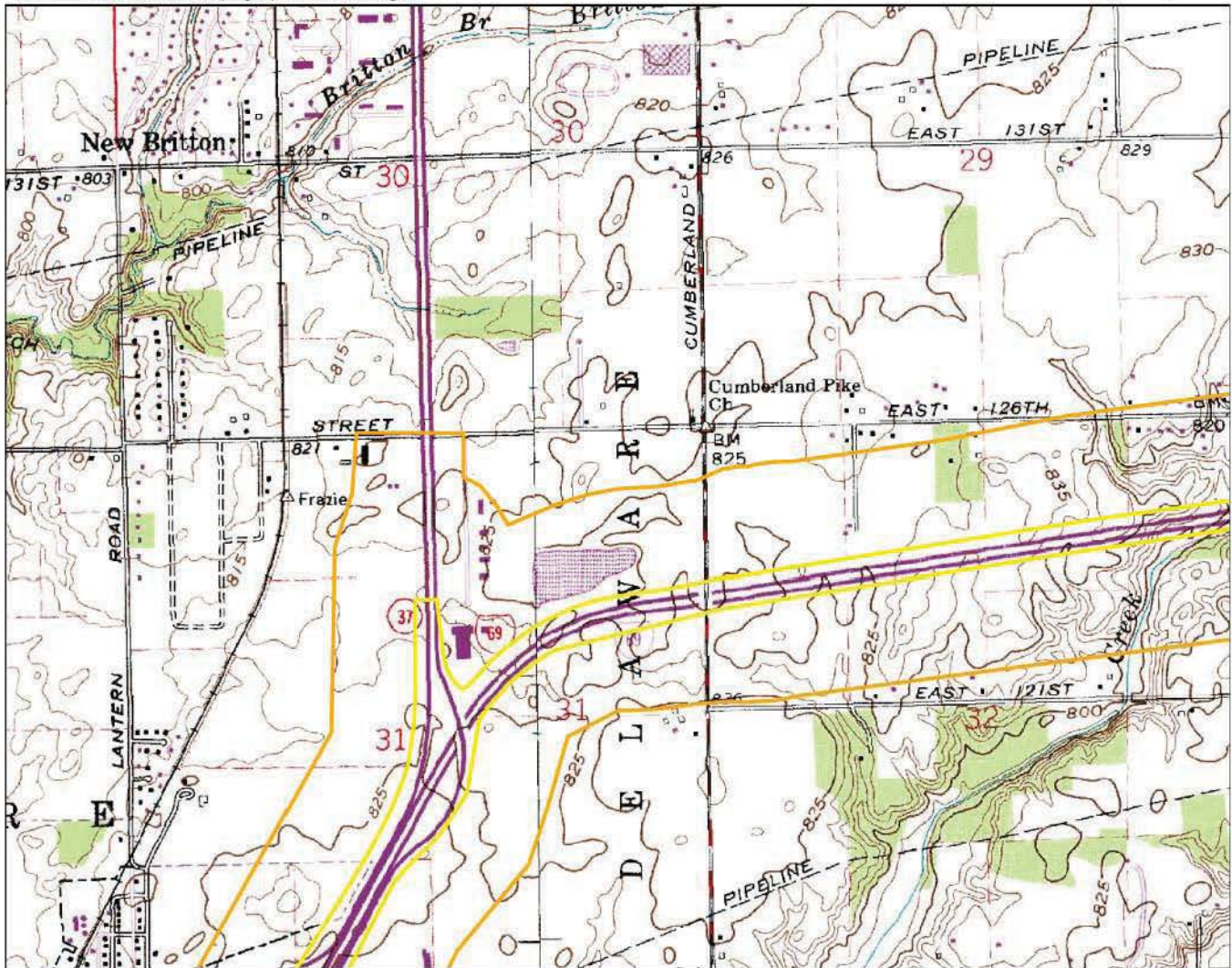
**WEINTRAUT & ASSOCIATES, INC.**

Note: Information shown on this map is not warranted for accuracy or merchantability. GIS data used to create this map are from the best known sources existing at this time. However, experience shows that many national datasets are not all inclusive. Use of this map should be limited to planning, and should not replace field review or background checks with other sources. It is intended to serve as an aid in graphic representation only. This map does not represent a legal document.

I-69 Added Travel Lanes from 106th Street to State Road 13: Zoom-in Map 2  
 Delaware, Fall Creek, & Wayne Townships, Hamilton County, Indiana  
 Green Township, Madison County, Indiana  
 Des. Nos.: 1383332 & 1383336  
 Portion of the USGS 7.5' series McCordsville, Riverwood, Ingalls, Lapel,  
 and Fishers, Indiana Topographic Quadrangle



April 18, 2014



	Project Location
	APE
	Previously Determined NRHP-Eligible
	NRHP-Eligible
	Contributing Property
	No Longer Extant

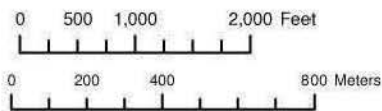
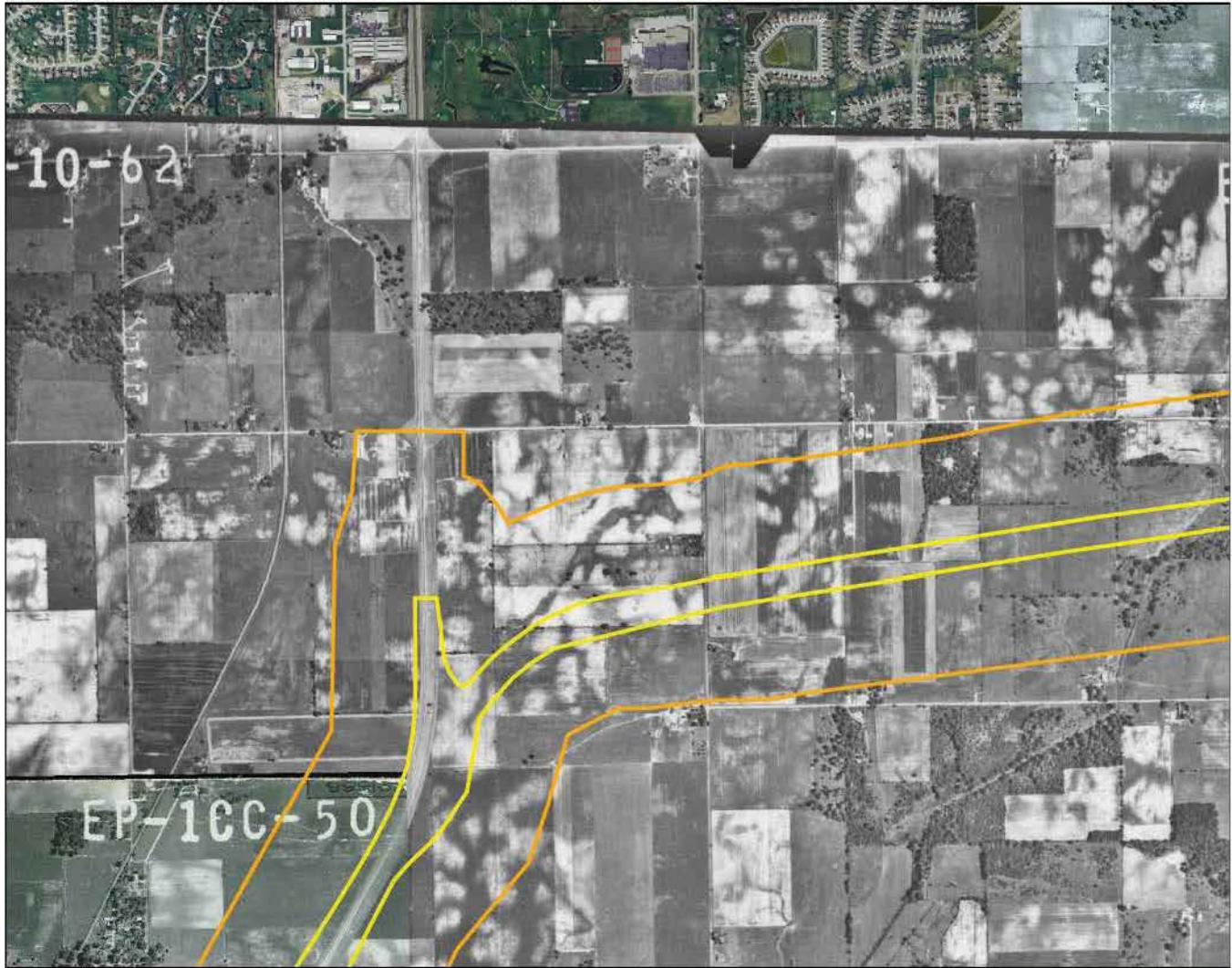


**WEINTRAUT & ASSOCIATES, INC.**

Note: Information shown on this map is not warranted for accuracy or merchantability. GIS data used to create this map are from the best known sources existing at this time. However, experience shows that many national datasets are not all inclusive. Use of this map should be limited to planning, and should not replace field review or background checks with other sources. It is intended to serve as an aid in graphic representation only. This map does not represent a legal document.



April 18, 2014



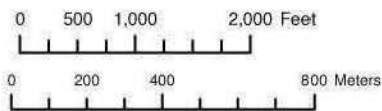
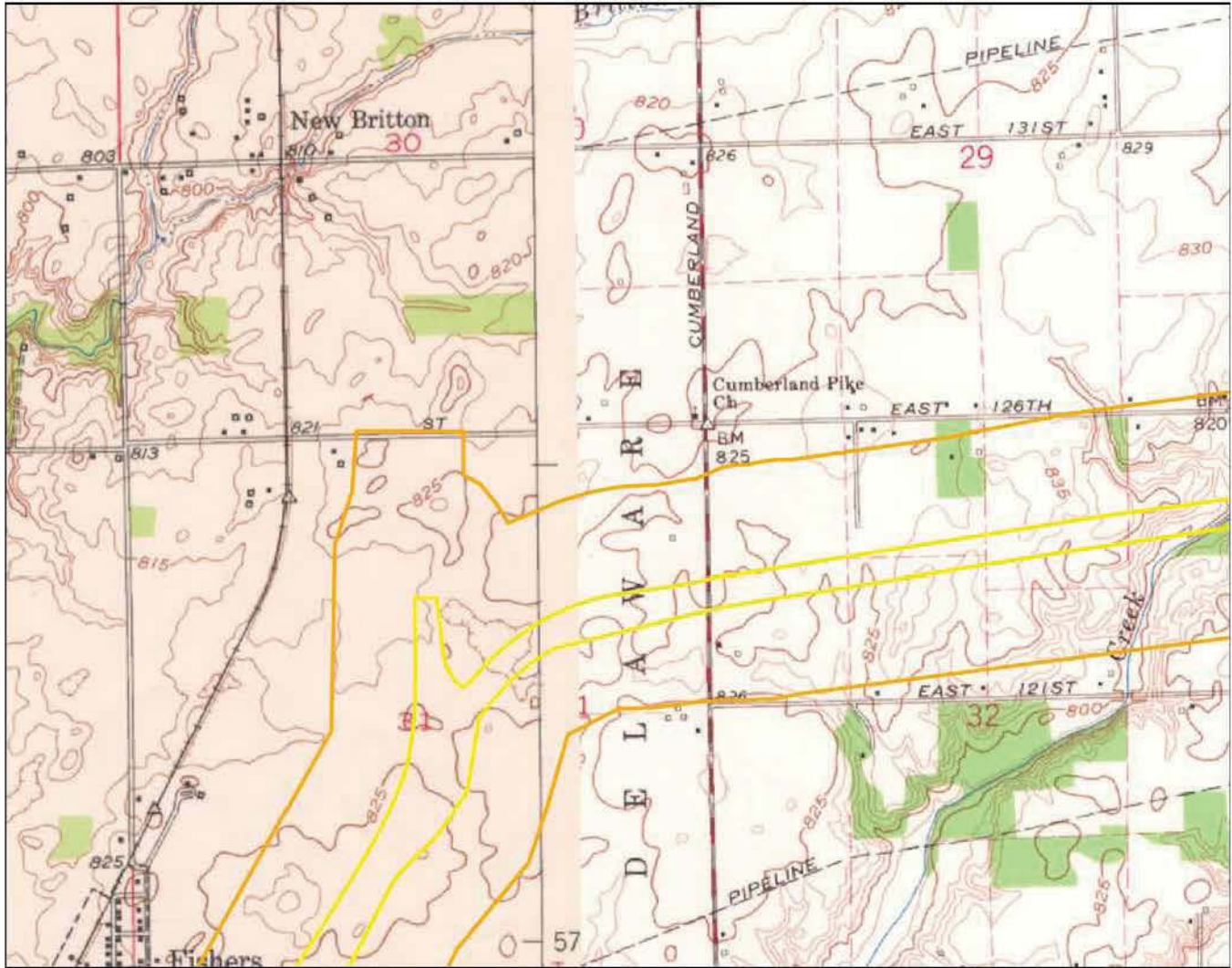
**WEINTRAUT & ASSOCIATES, INC.**

Note: Information shown on this map is not warranted for accuracy or merchantability. GIS data used to create this map are from the best known sources existing at this time. However, experience shows that many national datasets are not all inclusive. Use of this map should be limited to planning, and should not replace field review or background checks with other sources. It is intended to serve as an aid in graphic representation only. This map does not represent a legal document.

I-69 Added Travel Lanes from 106th Street to State Road 13: Zoom-in Map 2  
 Delaware, Fall Creek, & Wayne Townships, Hamilton County, Indiana  
 Green Township, Madison County, Indiana  
 Des. Nos.: 1383332 & 1383336  
 Portion of the USGS 7.5' series McCordsville 1962, Riverwood 1953, Ingalls 1952, Lapel 1953,  
 and Fishers 1952, Indiana Topographic Quadrangle



April 18, 2014



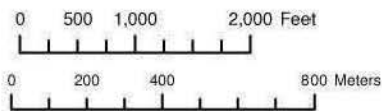
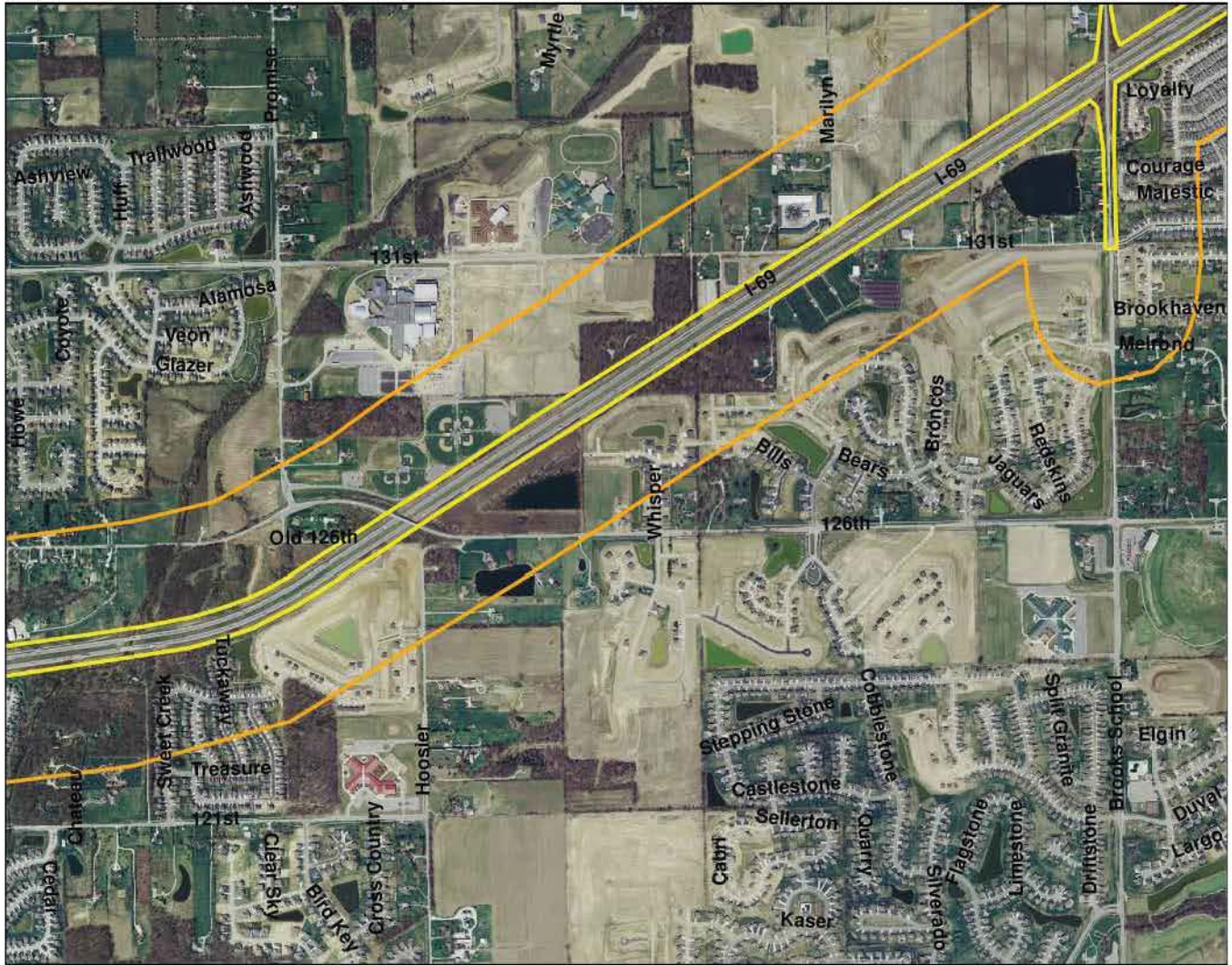
**WEINTRAUT & ASSOCIATES, INC.**

Note: Information shown on this map is not warranted for accuracy or merchantability. GIS data used to create this map are from the best known sources existing at this time. However, experience shows that many national datasets are not all inclusive. Use of this map should be limited to planning, and should not replace field review or background checks with other sources. It is intended to serve as an aid in graphic representation only. This map does not represent a legal document.

I-69 Added Travel Lanes from 106th Street to State Road 13: Zoom-in Map 3  
 Delaware, Fall Creek, & Wayne Townships, Hamilton County, Indiana  
 Green Township, Madison County, Indiana  
 Des. Nos.: 1383332 & 1383336  
 2005 Aerial Photo



April 18, 2014



	Project Location
	APE
	Previously Determined NRHP-Eligible
	NRHP-Eligible
	Contributing Property
	No Longer Extant



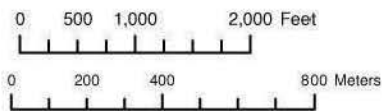
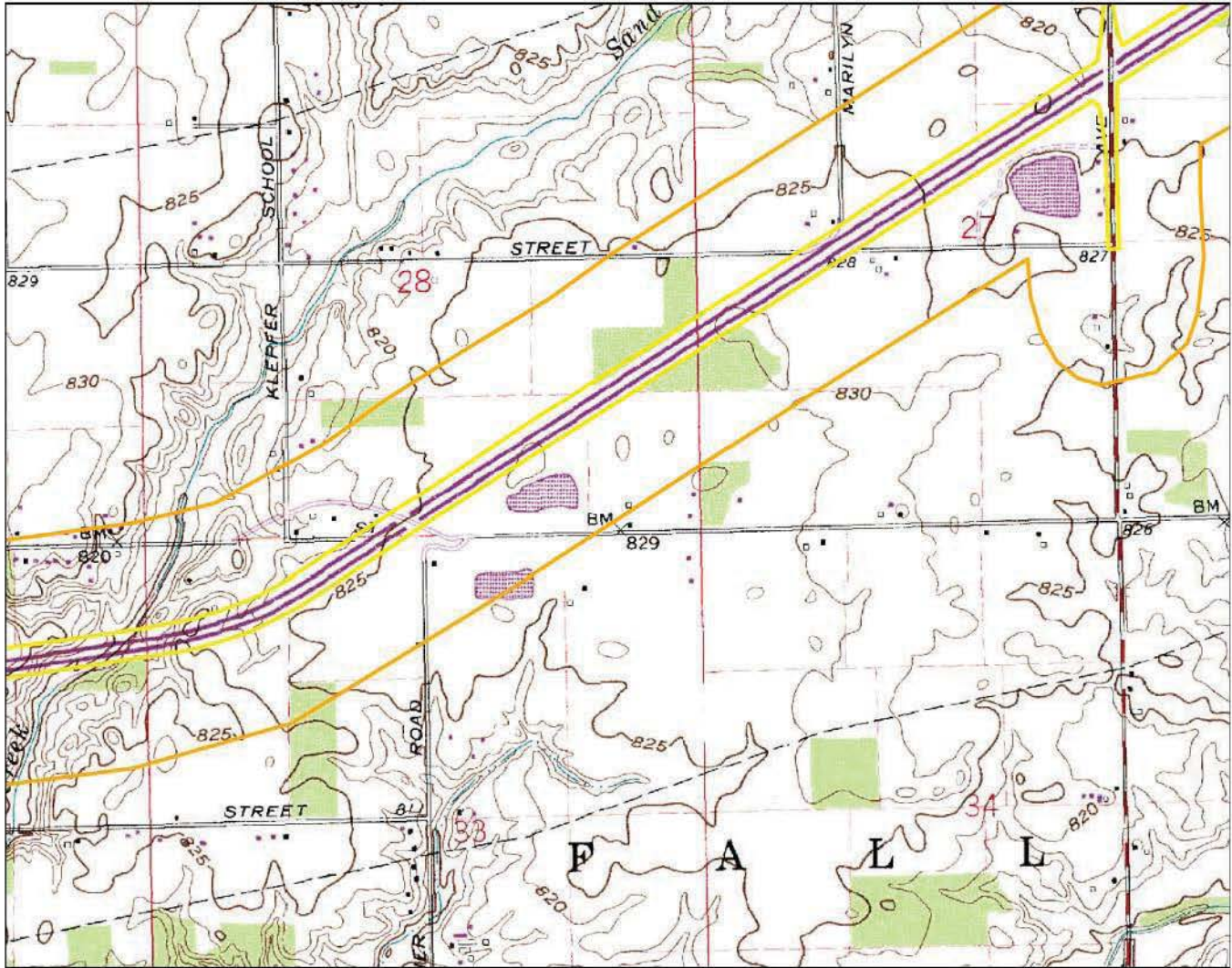
**WEINTRAUT & ASSOCIATES, INC.**

Note: Information shown on this map is not warranted for accuracy or merchantability. GIS data used to create this map are from the best known sources existing at this time. However, experience shows that many national datasets are not all inclusive. Use of this map should be limited to planning, and should not replace field review or background checks with other sources. It is intended to serve as an aid in graphic representation only. This map does not represent a legal document.

I-69 Added Travel Lanes from 106th Street to State Road 13: Zoom-in Map 3  
 Delaware, Fall Creek, & Wayne Townships, Hamilton County, Indiana  
 Green Township, Madison County, Indiana  
 Des. Nos.: 1383332 & 1383336  
 Portion of the USGS 7.5' series McCordsville, Riverwood, Ingalls, Lapel,  
 and Fishers, Indiana Topographic Quadrangle



April 18, 2014



	Project Location
	APE
	Previously Determined NRHP-Eligible
	NRHP-Eligible
	Contributing Property
	No Longer Extant

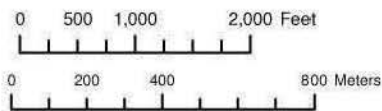
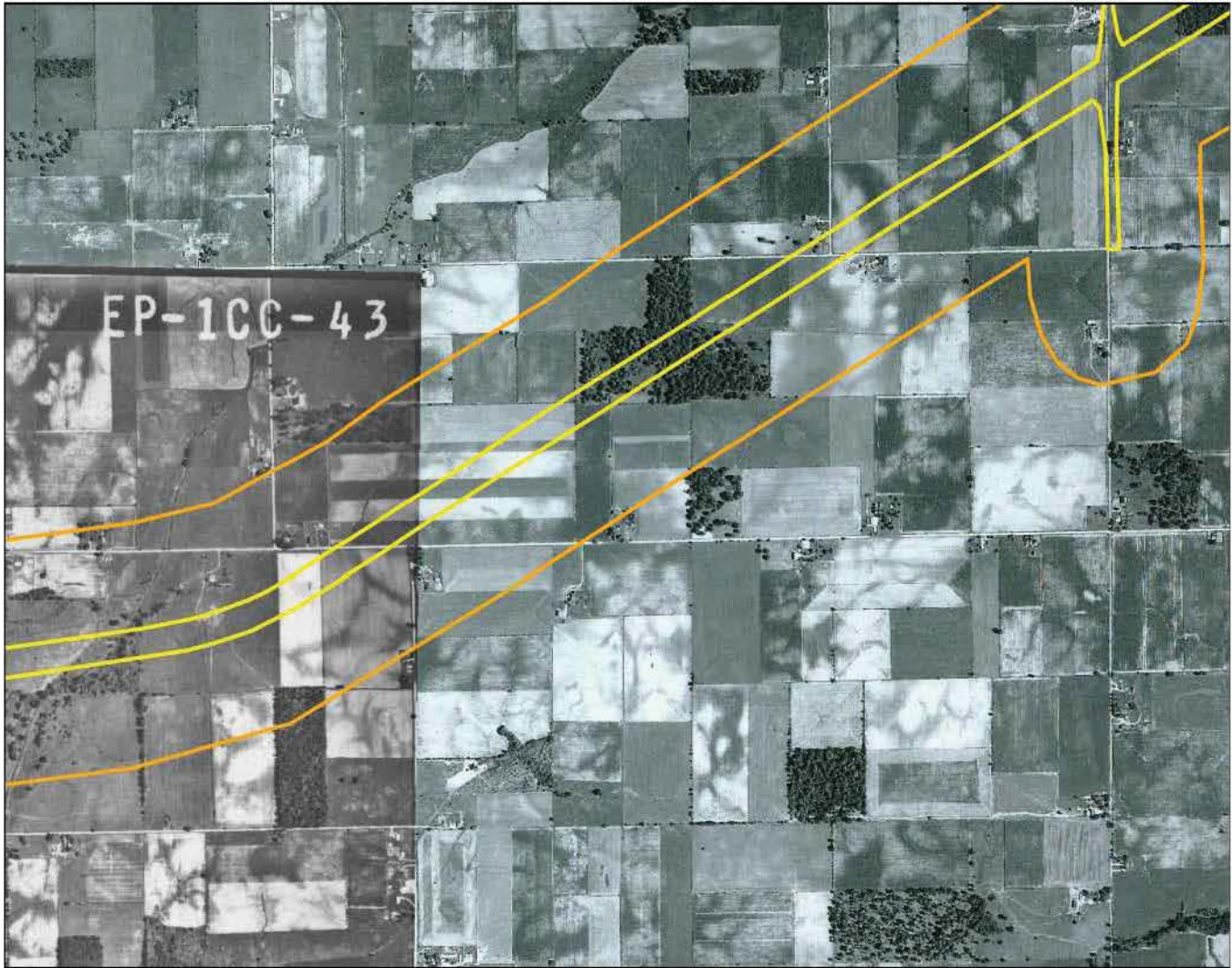


**WEINTRAUT & ASSOCIATES, INC.**

Note: Information shown on this map is not warranted for accuracy or merchantability. GIS data used to create this map are from the best known sources existing at this time. However, experience shows that many national datasets are not all inclusive. Use of this map should be limited to planning, and should not replace field review or background checks with other sources. It is intended to serve as an aid in graphic representation only. This map does not represent a legal document.



April 18, 2014



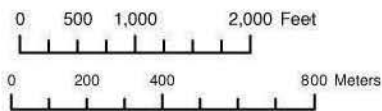
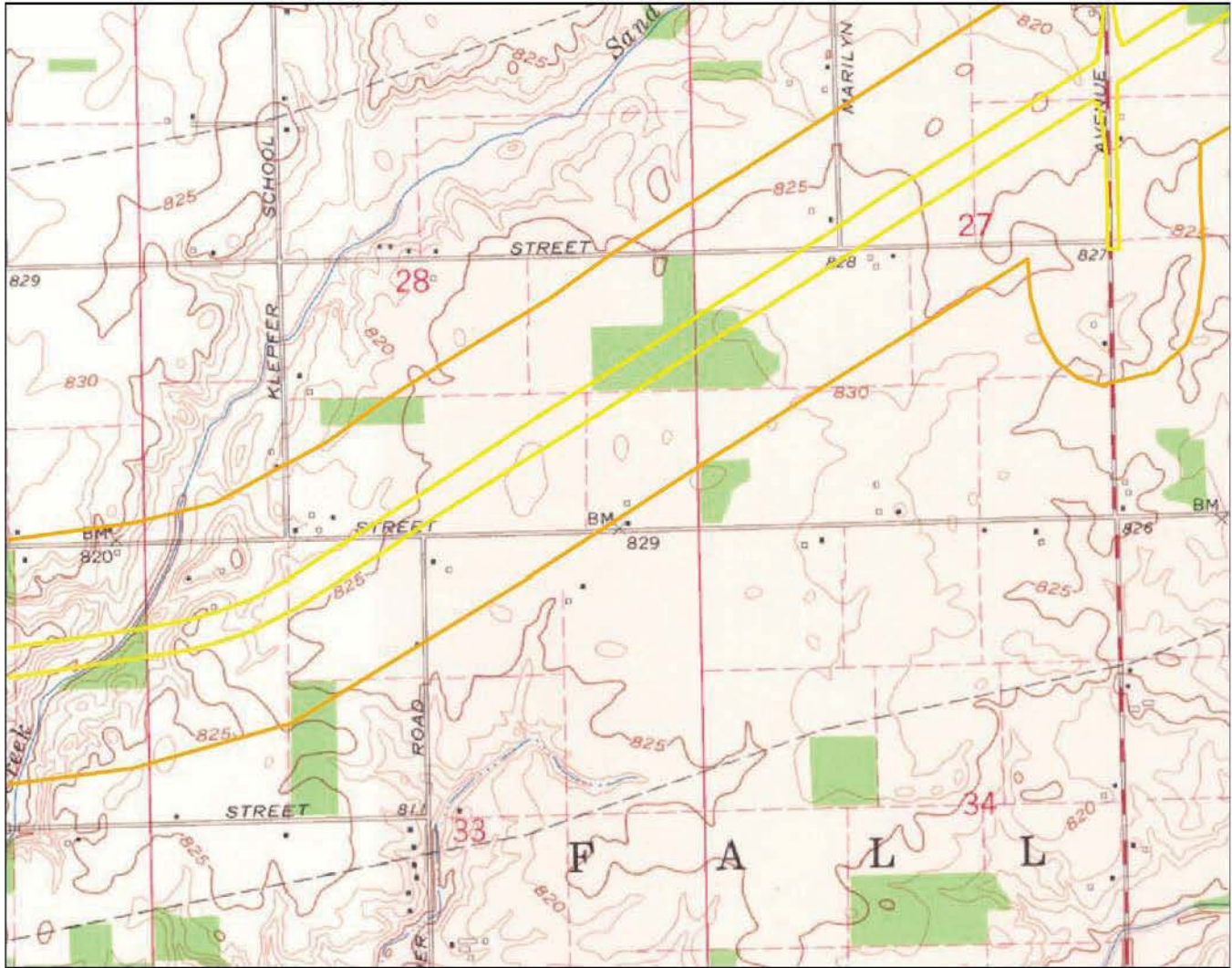
**WEINTRAUT & ASSOCIATES, INC.**

Note: Information shown on this map is not warranted for accuracy or merchantability. GIS data used to create this map are from the best known sources existing at this time. However, experience shows that many national datasets are not all inclusive. Use of this map should be limited to planning, and should not replace field review or background checks with other sources. It is intended to serve as an aid in graphic representation only. This map does not represent a legal document.

I-69 Added Travel Lanes from 106th Street to State Road 13: Zoom-in Map 3  
 Delaware, Fall Creek, & Wayne Townships, Hamilton County, Indiana  
 Green Township, Madison County, Indiana  
 Des. Nos.: 1383332 & 1383336  
 Portion of the USGS 7.5' series McCordsville 1962, Riverwood 1953, Ingalls 1952, Lapel 1953,  
 and Fishers 1952, Indiana Topographic Quadrangle



April 18, 2014



	Project Location
	APE
	Previously Determined NRHP-Eligible
	NRHP-Eligible
	Contributing Property
	No Longer Extant

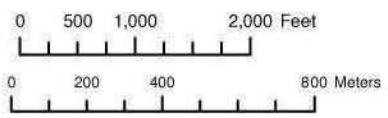
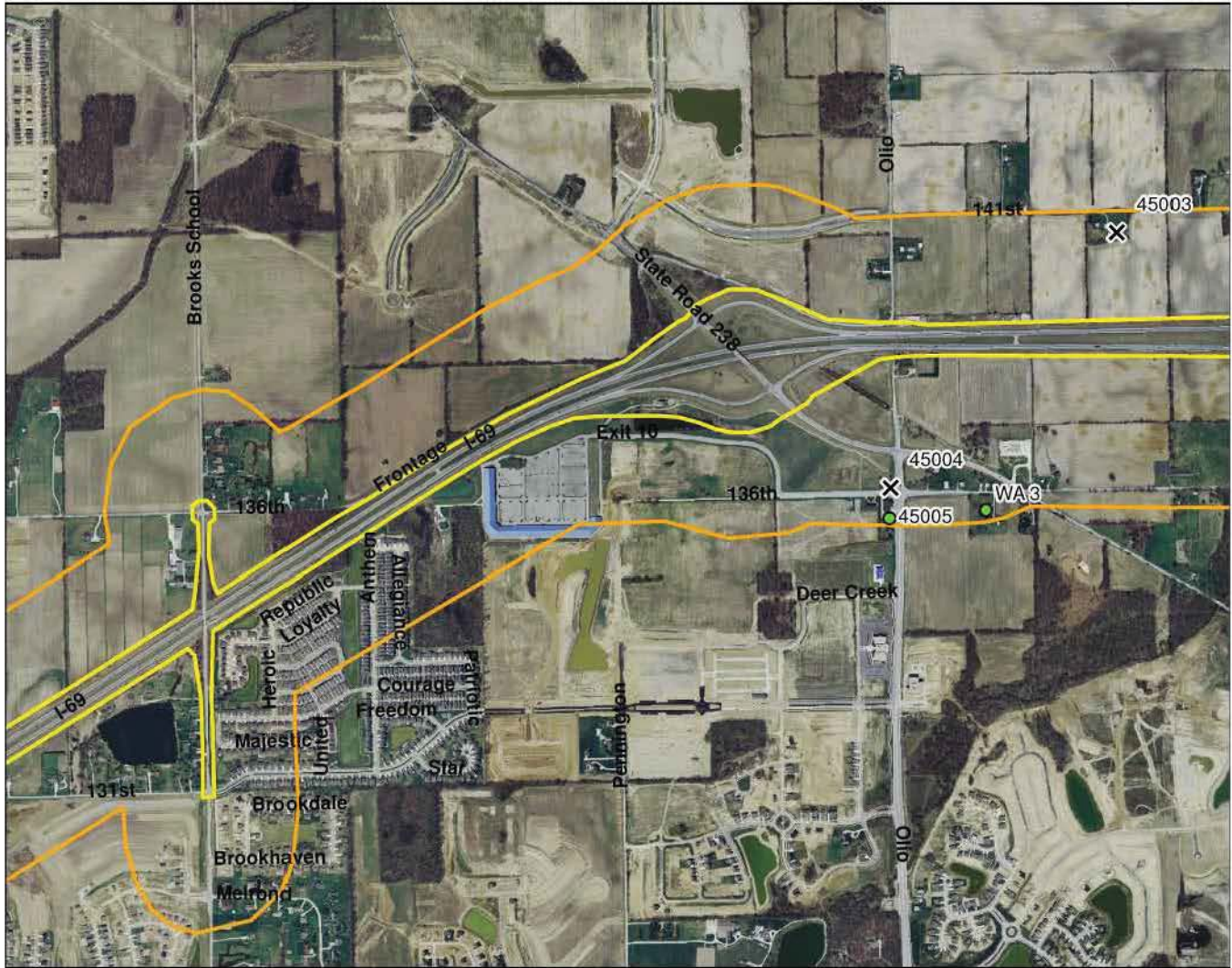


**WEINTRAUT & ASSOCIATES, INC.**

Note: Information shown on this map is not warranted for accuracy or merchantability. GIS data used to create this map are from the best known sources existing at this time. However, experience shows that many national datasets are not all inclusive. Use of this map should be limited to planning, and should not replace field review or background checks with other sources. It is intended to serve as an aid in graphic representation only. This map does not represent a legal document.



April 18, 2014



	Project Location
	APE
	Previously Determined NRHP-Eligible
	NRHP-Eligible
	Contributing Property
	No Longer Extant



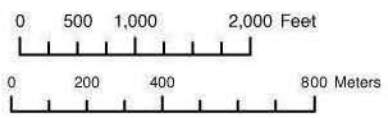
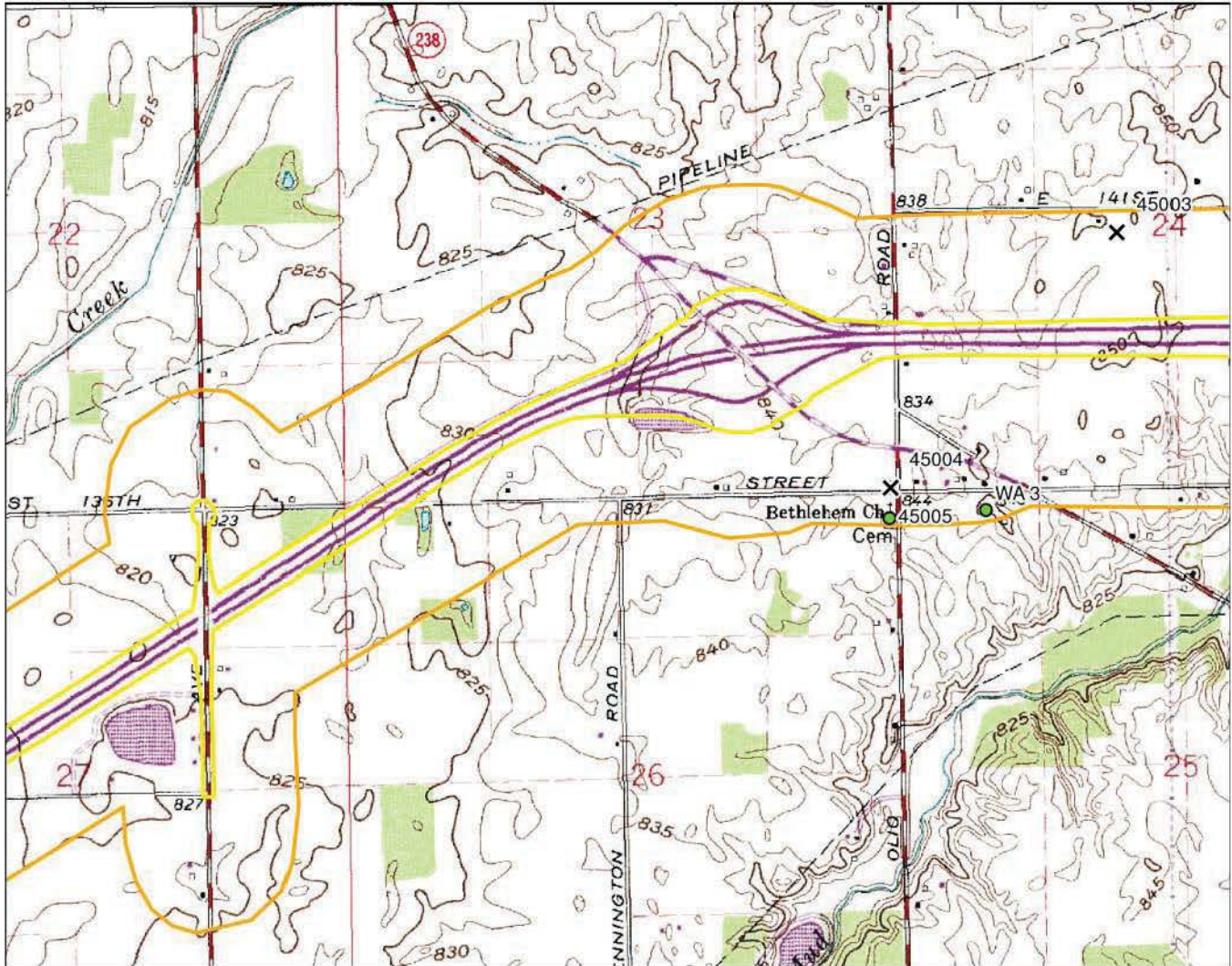
**WEINTRAUT & ASSOCIATES, INC.**

Note: Information shown on this map is not warranted for accuracy or merchantability. GIS data used to create this map are from the best known sources existing at this time. However, experience shows that many national datasets are not all inclusive. Use of this map should be limited to planning, and should not replace field review or background checks with other sources. It is intended to serve as an aid in graphic representation only. This map does not represent a legal document.

I-69 Added Travel Lanes from 106th Street to State Road 13: Zoom-in Map 4  
 Delaware, Fall Creek, & Wayne Townships, Hamilton County, Indiana  
 Green Township, Madison County, Indiana  
 Des. Nos.: 1383332 & 1383336  
 Portion of the USGS 7.5' series McCordsville, Riverwood, Ingalls, Lapel,  
 and Fishers, Indiana Topographic Quadrangle



April 18, 2014



	Project Location
	APE
	Previously Determined NRHP-Eligible
	NRHP-Eligible
	Contributing Property
	No Longer Extant

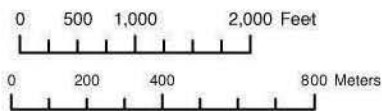
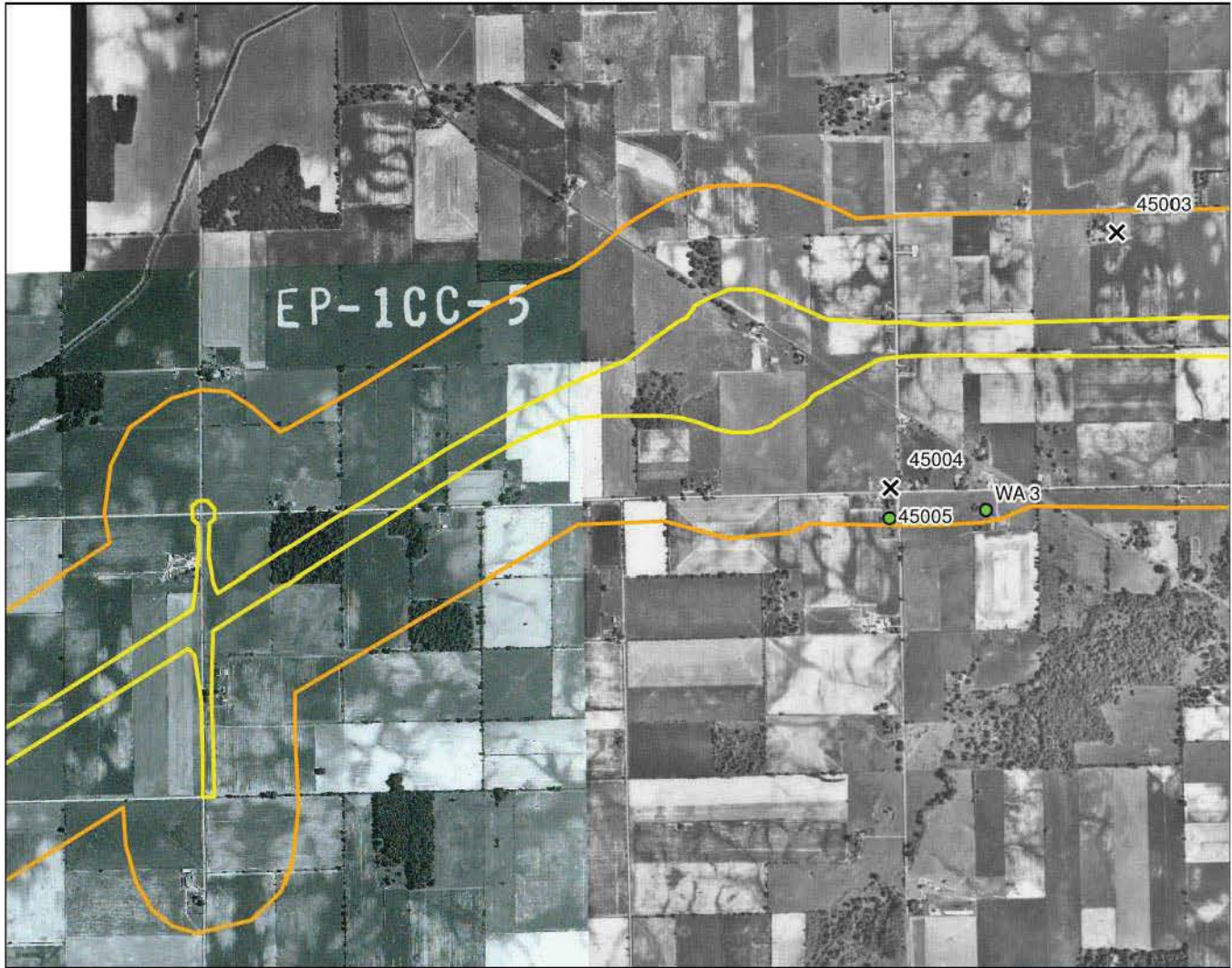


**WEINTRAUT & ASSOCIATES, INC.**

Note: Information shown on this map is not warranted for accuracy or merchantability. GIS data used to create this map are from the best known sources existing at this time. However, experience shows that many national datasets are not all inclusive. Use of this map should be limited to planning, and should not replace field review or background checks with other sources. It is intended to serve as an aid in graphic representation only. This map does not represent a legal document.



April 18, 2014



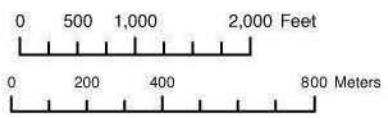
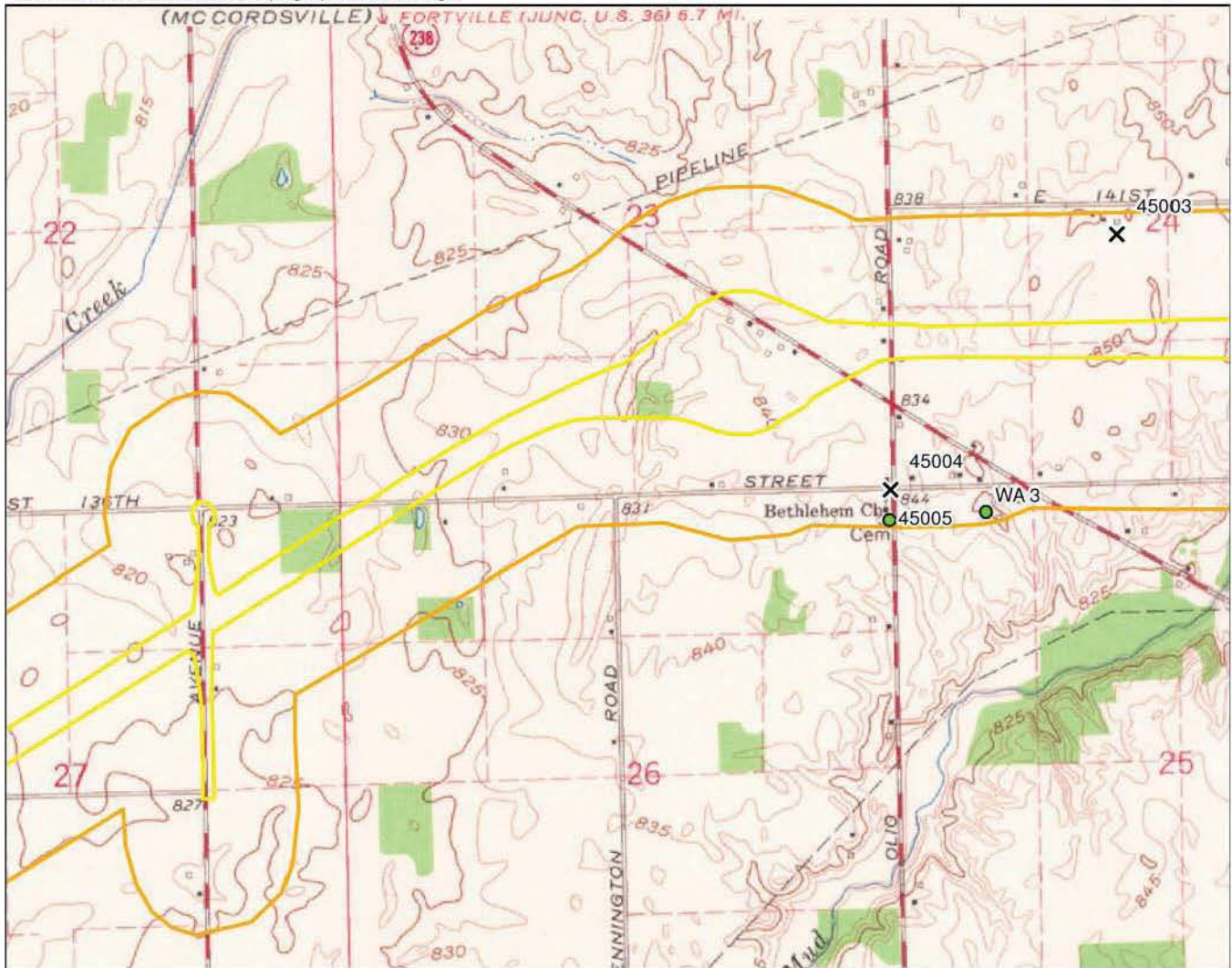
**WEINTRAUT & ASSOCIATES, INC.**

Note: Information shown on this map is not warranted for accuracy or merchantability. GIS data used to create this map are from the best known sources existing at this time. However, experience shows that many national datasets are not all inclusive. Use of this map should be limited to planning, and should not replace field review or background checks with other sources. It is intended to serve as an aid in graphic representation only. This map does not represent a legal document.

I-69 Added Travel Lanes from 106th Street to State Road 13: Zoom-in Map 4  
 Delaware, Fall Creek, & Wayne Townships, Hamilton County, Indiana  
 Green Township, Madison County, Indiana  
 Des. Nos.: 1383332 & 1383336  
 Portion of the USGS 7.5' series McCordsville 1962, Riverwood 1953, Ingalls 1952, Lapel 1953,  
 and Fishers 1952, Indiana Topographic Quadrangle



April 18, 2014



	Project Location
	APE
	Previously Determined NRHP-Eligible
	NRHP-Eligible
	Contributing Property
	No Longer Extant

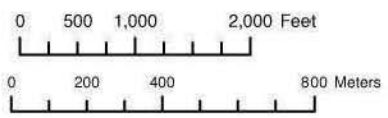
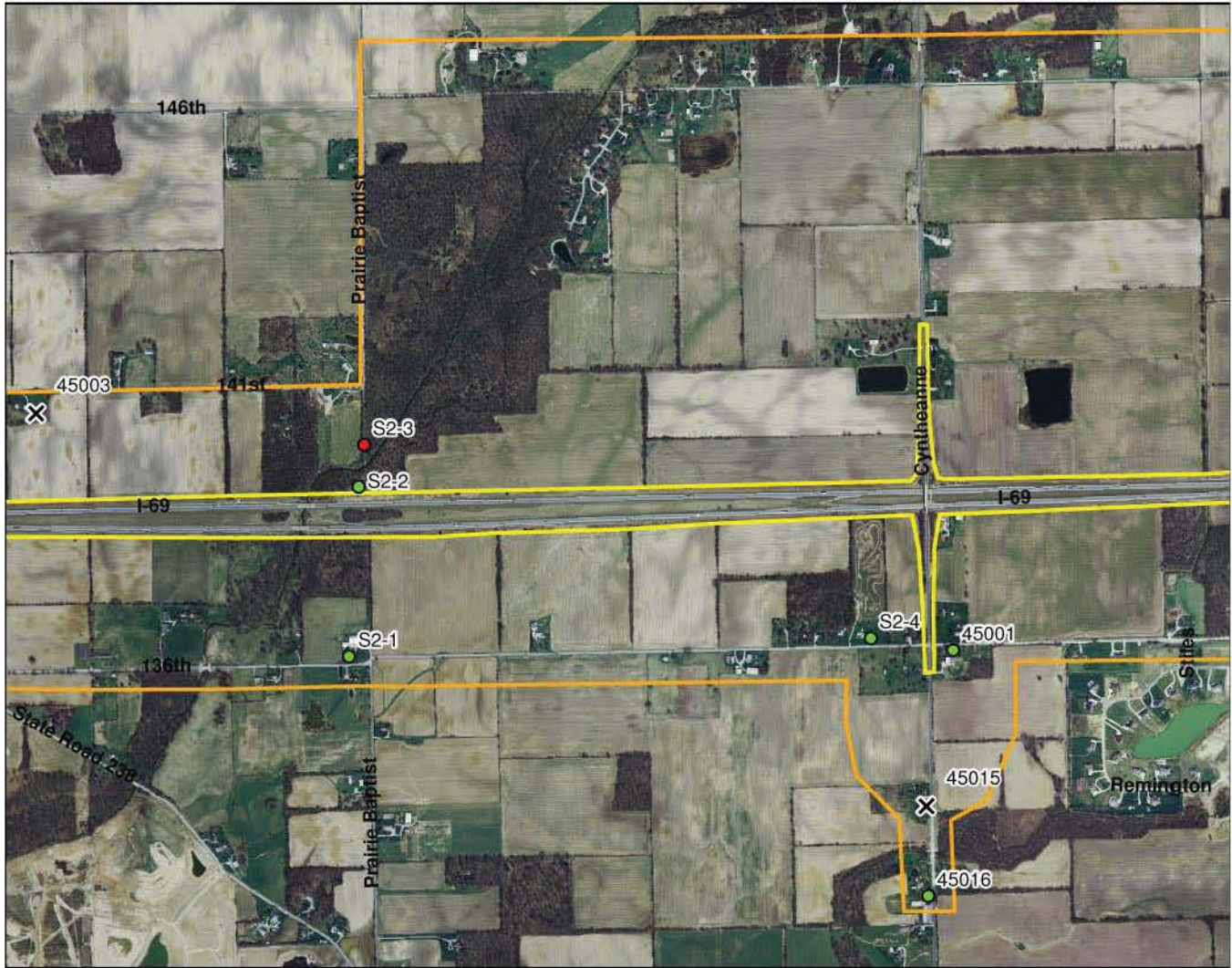


**WEINTRAUT & ASSOCIATES, INC.**

Note: Information shown on this map is not warranted for accuracy or merchantability. GIS data used to create this map are from the best known sources existing at this time. However, experience shows that many national datasets are not all inclusive. Use of this map should be limited to planning, and should not replace field review or background checks with other sources. It is intended to serve as an aid in graphic representation only. This map does not represent a legal document.



April 18, 2014



	Project Location
	APE
	Previously Determined NRHP-Eligible
	NRHP-Eligible
	Contributing Property
	No Longer Extant

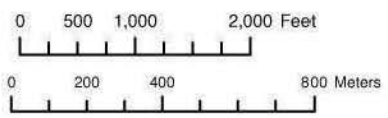
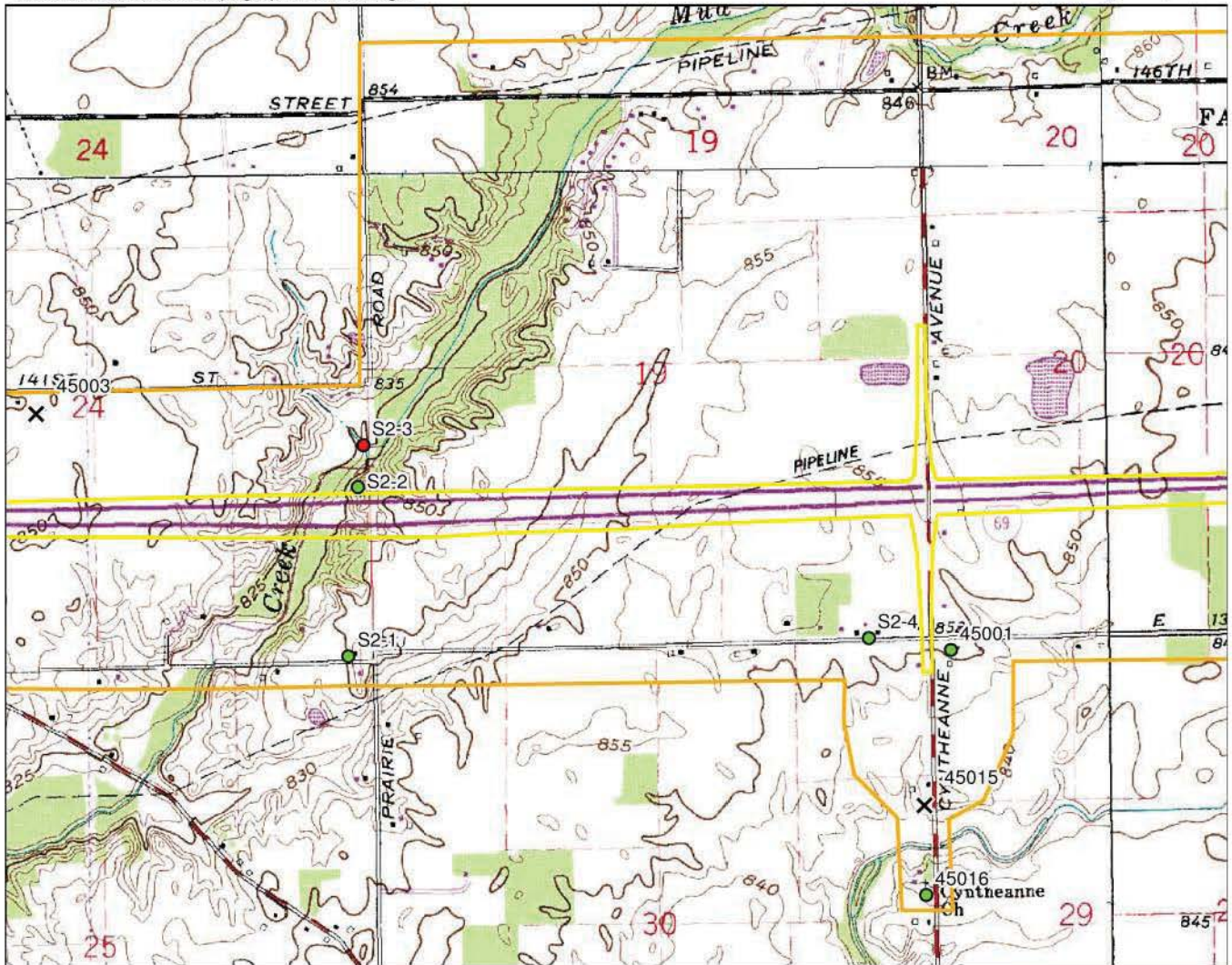


**WEINTRAUT & ASSOCIATES, INC.**

Note: Information shown on this map is not warranted for accuracy or merchantability. GIS data used to create this map are from the best known sources existing at this time. However, experience shows that many national datasets are not all inclusive. Use of this map should be limited to planning, and should not replace field review or background checks with other sources. It is intended to serve as an aid in graphic representation only. This map does not represent a legal document.

I-69 Added Travel Lanes from 106th Street to State Road 13: Zoom-in Map 5  
 Delaware, Fall Creek, & Wayne Townships, Hamilton County, Indiana  
 Green Township, Madison County, Indiana  
 Des. Nos.: 1383332 & 1383336  
 Portion of the USGS 7.5' series McCordsville, Riverwood, Ingalls, Lapel,  
 and Fishers, Indiana Topographic Quadrangle

April 18, 2014



	Project Location
	APE
	Previously Determined NRHP-Eligible
	NRHP-Eligible
	Contributing Property
	No Longer Extant

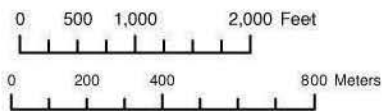
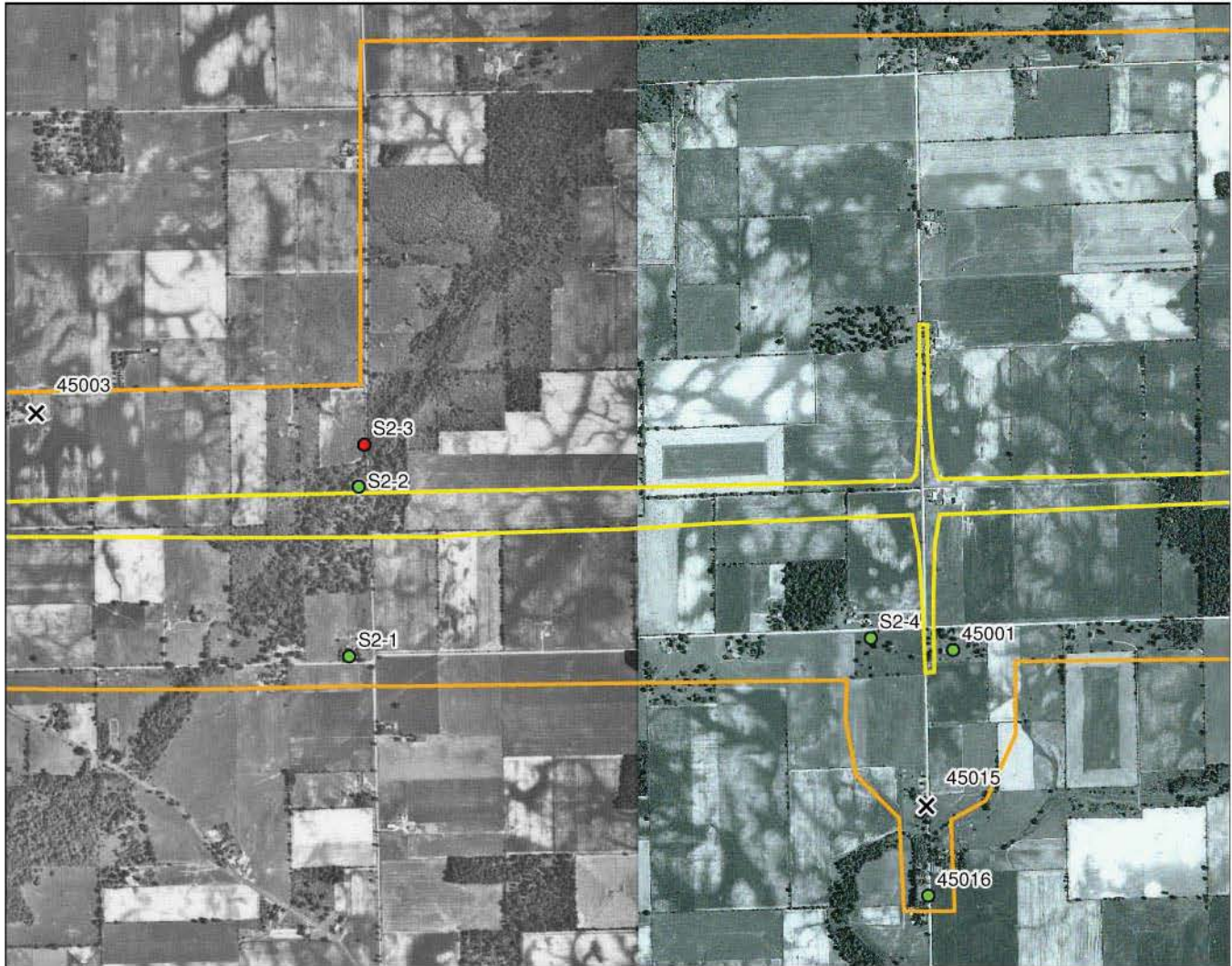


**WEINTRAUT & ASSOCIATES, INC.**

Note: Information shown on this map is not warranted for accuracy or merchantability. GIS data used to create this map are from the best known sources existing at this time. However, experience shows that many national datasets are not all inclusive. Use of this map should be limited to planning, and should not replace field review or background checks with other sources. It is intended to serve as an aid in graphic representation only. This map does not represent a legal document.



April 18, 2014



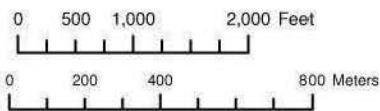
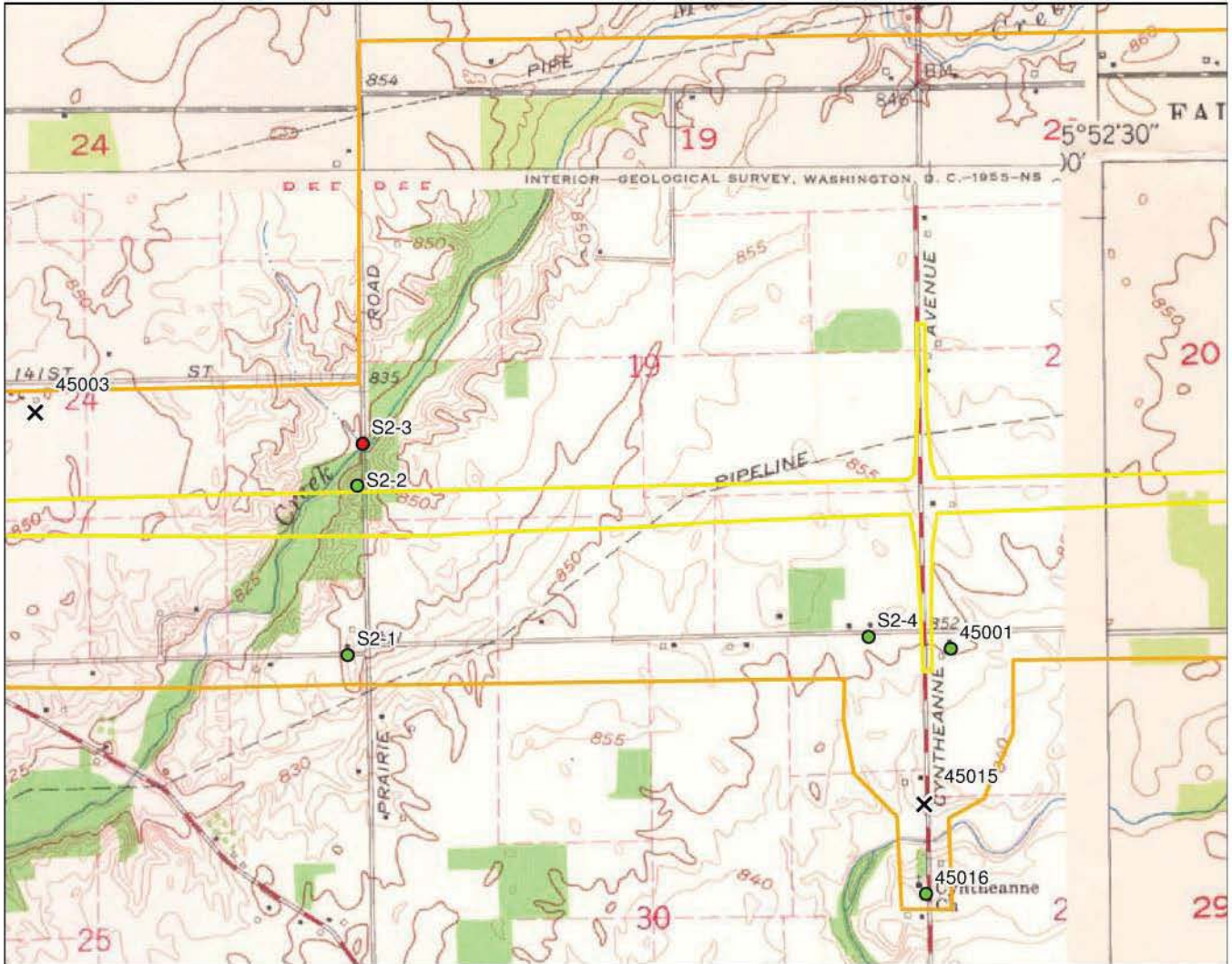
**WEINTRAUT & ASSOCIATES, INC.**

Note: Information shown on this map is not warranted for accuracy or merchantability. GIS data used to create this map are from the best known sources existing at this time. However, experience shows that many national datasets are not all inclusive. Use of this map should be limited to planning, and should not replace field review or background checks with other sources. It is intended to serve as an aid in graphic representation only. This map does not represent a legal document.

I-69 Added Travel Lanes from 106th Street to State Road 13: Zoom-in Map 5  
 Delaware, Fall Creek, & Wayne Townships, Hamilton County, Indiana  
 Green Township, Madison County, Indiana  
 Des. Nos.: 1383332 & 1383336  
 Portion of the USGS 7.5' series McCordsville 1962, Riverwood 1953, Ingalls 1952, Lapel 1953,  
 and Fishers 1952, Indiana Topographic Quadrangle



April 18, 2014



	Project Location
	APE
	Previously Determined NRHP-Eligible
	NRHP-Eligible
	Contributing Property
	No Longer Extant



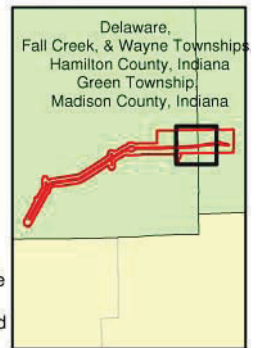
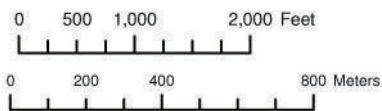
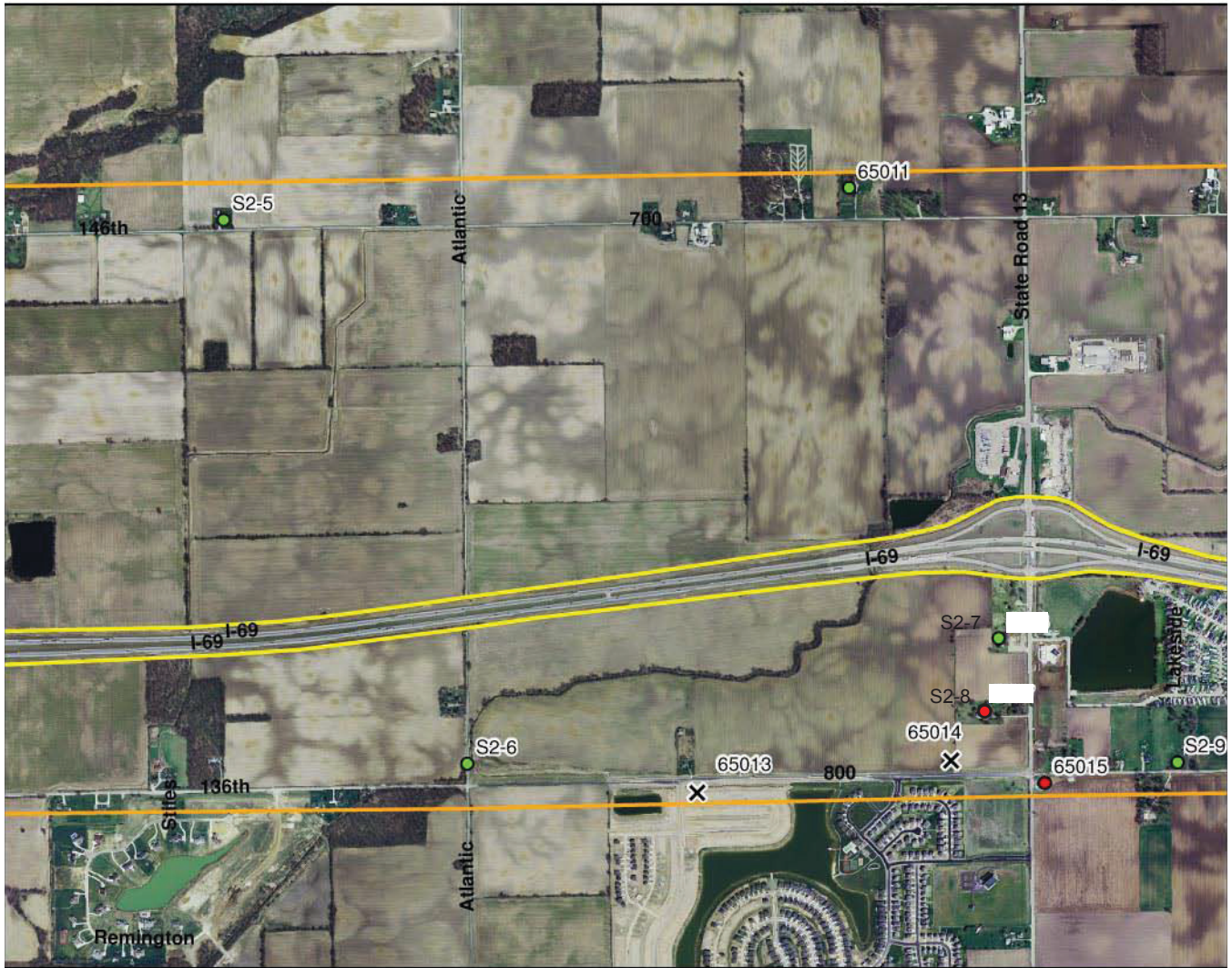
**WEINTRAUT & ASSOCIATES, INC.**

Note: Information shown on this map is not warranted for accuracy or merchantability. GIS data used to create this map are from the best known sources existing at this time. However, experience shows that many national datasets are not all inclusive. Use of this map should be limited to planning, and should not replace field review or background checks with other sources. It is intended to serve as an aid in graphic representation only. This map does not represent a legal document.

I-69 Added Travel Lanes from 106th Street to State Road 13: Zoom-in Map 6  
 Delaware, Fall Creek, & Wayne Townships, Hamilton County, Indiana  
 Green Township, Madison County, Indiana  
 Des. Nos.: 1383332 & 1383336  
 2005 Aerial Photo



April 21, 2014



**WEINTRAUT & ASSOCIATES, INC.**

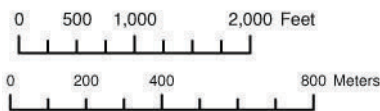
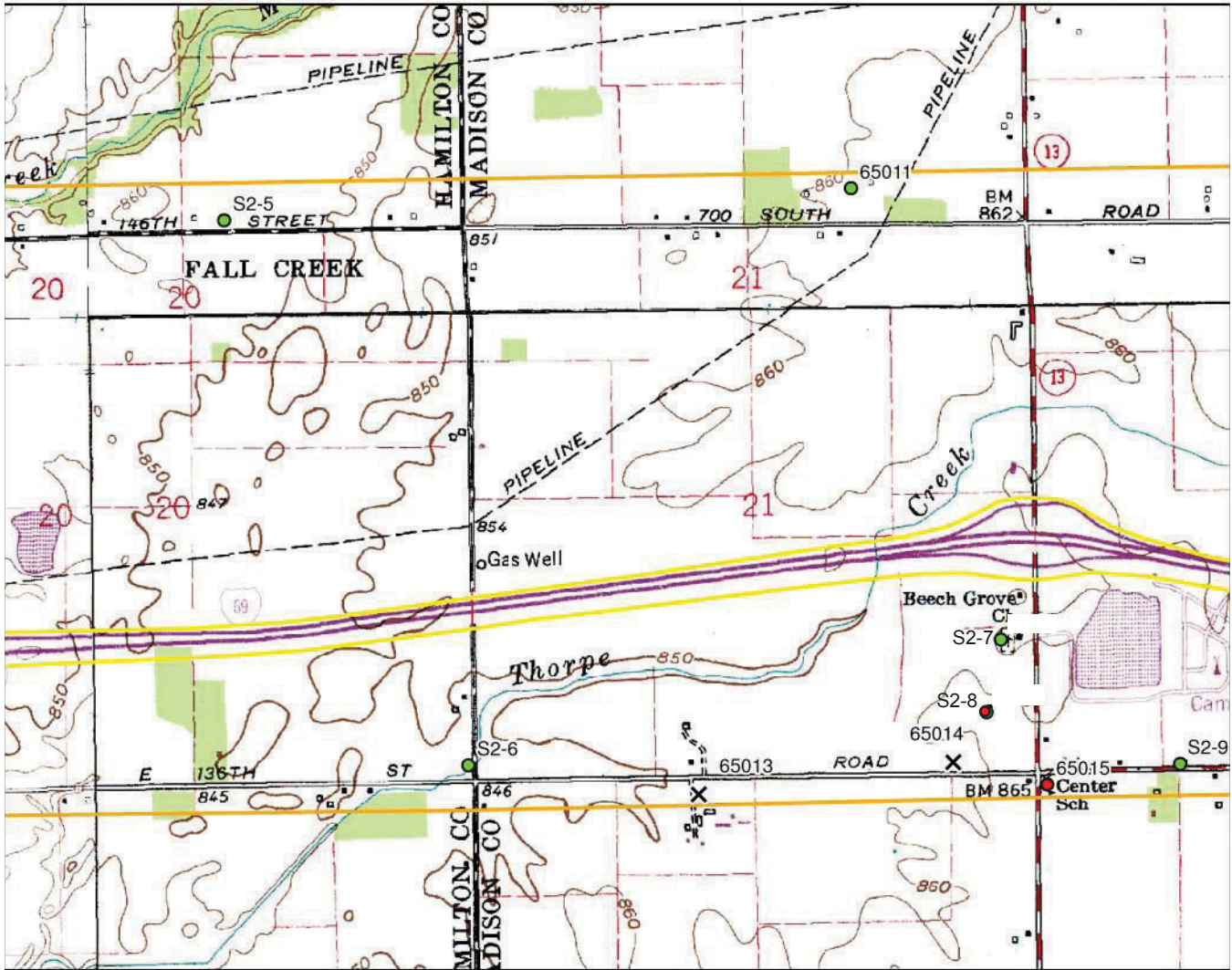
Note: Information shown on this map is not warranted for accuracy or merchantability. GIS data used to create this map are from the best known sources existing at this time. However, experience shows that many national datasets are not all inclusive. Use of this map should be limited to planning, and should not replace field review or background checks with other sources. It is intended to serve as an aid in graphic representation only. This map does not represent a legal document.

WEINTRAUT & ASSOCIATES, INC.

I-69 Added Travel Lanes from 106th Street to State Road 13: Zoom-in Map 6  
 Delaware, Fall Creek, & Wayne Townships, Hamilton County, Indiana  
 Green Township, Madison County, Indiana  
 Des. Nos.: 1383332 & 1383336  
 Portion of the USGS 7.5' series McCordsville, Riverwood, Ingalls, Lapel,  
 and Fishers, Indiana Topographic Quadrangle



April 21, 2014



	Project Location
	APE
	Previously Determined NRHP-Eligible
	NRHP-Eligible
	Contributing Property
	No Longer Extant



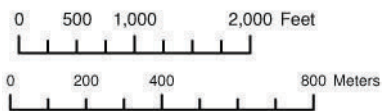
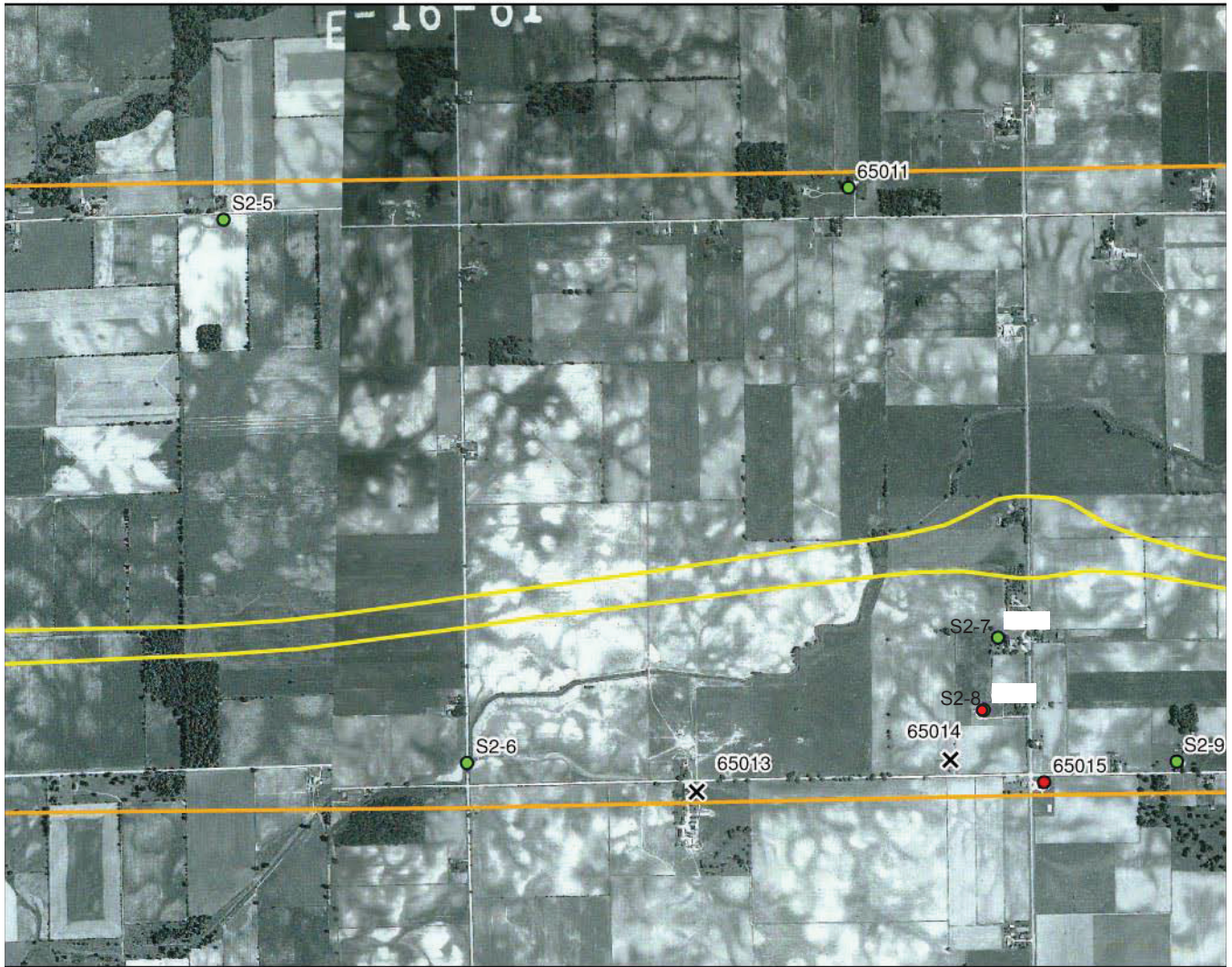
**WEINTRAUT & ASSOCIATES, INC.**

Note: Information shown on this map is not warranted for accuracy or merchantability. GIS data used to create this map are from the best known sources existing at this time. However, experience shows that many national datasets are not all inclusive. Use of this map should be limited to planning, and should not replace field review or background checks with other sources. It is intended to serve as an aid in graphic representation only. This map does not represent a legal document.

WEINTRAUT & ASSOCIATES, INC.



April 21, 2014



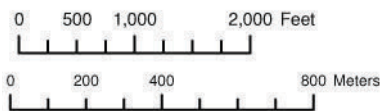
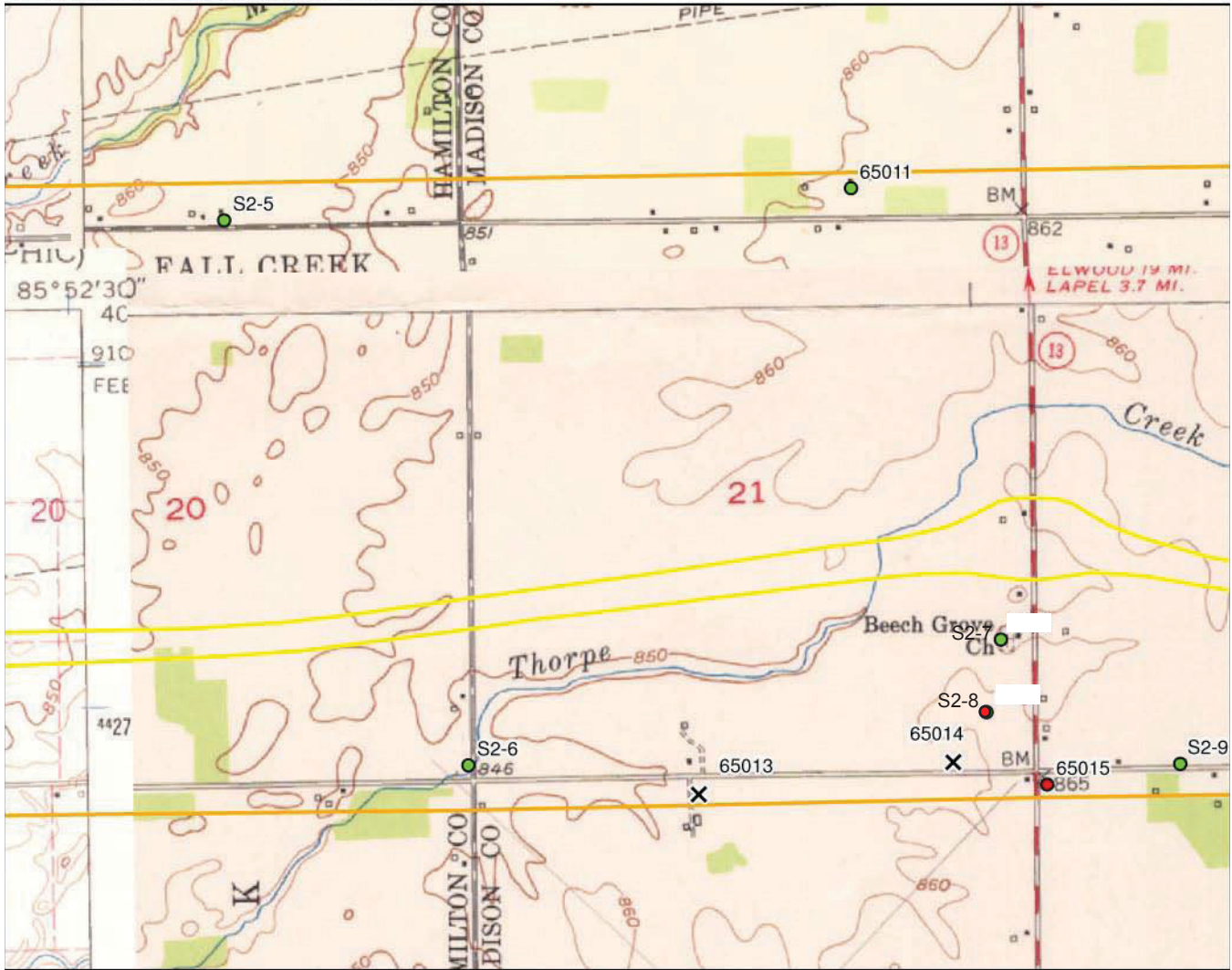
**WEINTRAUT & ASSOCIATES, INC.**

Note: Information shown on this map is not warranted for accuracy or merchantability. GIS data used to create this map are from the best known sources existing at this time. However, experience shows that many national datasets are not all inclusive. Use of this map should be limited to planning, and should not replace field review or background checks with other sources. It is intended to serve as an aid in graphic representation only. This map does not represent a legal document.

I-69 Added Travel Lanes from 106th Street to State Road 13: Zoom-in Map 6  
 Delaware, Fall Creek, & Wayne Townships, Hamilton County, Indiana  
 Green Township, Madison County, Indiana  
 Des. Nos.: 1383332 & 1383336  
 Portion of the USGS 7.5' series McCordsville 1962, Riverwood 1953, Ingalls 1952, Lapel 1953,  
 and Fishers 1952, Indiana Topographic Quadrangle



April 21, 2014



	Project Location
	APE
	Previously Determined NRHP-Eligible
	NRHP-Eligible
	Contributing Property
	No Longer Extant



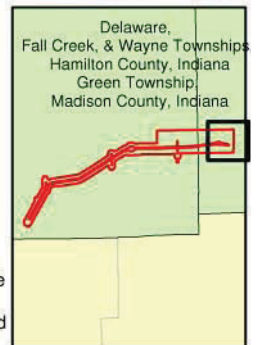
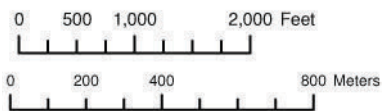
**WEINTRAUT & ASSOCIATES, INC.**

Note: Information shown on this map is not warranted for accuracy or merchantability. GIS data used to create this map are from the best known sources existing at this time. However, experience shows that many national datasets are not all inclusive. Use of this map should be limited to planning, and should not replace field review or background checks with other sources. It is intended to serve as an aid in graphic representation only. This map does not represent a legal document.

WEINTRAUT & ASSOCIATES, INC.



April 21, 2014

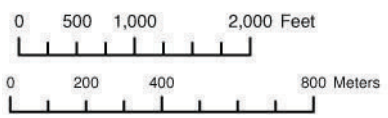
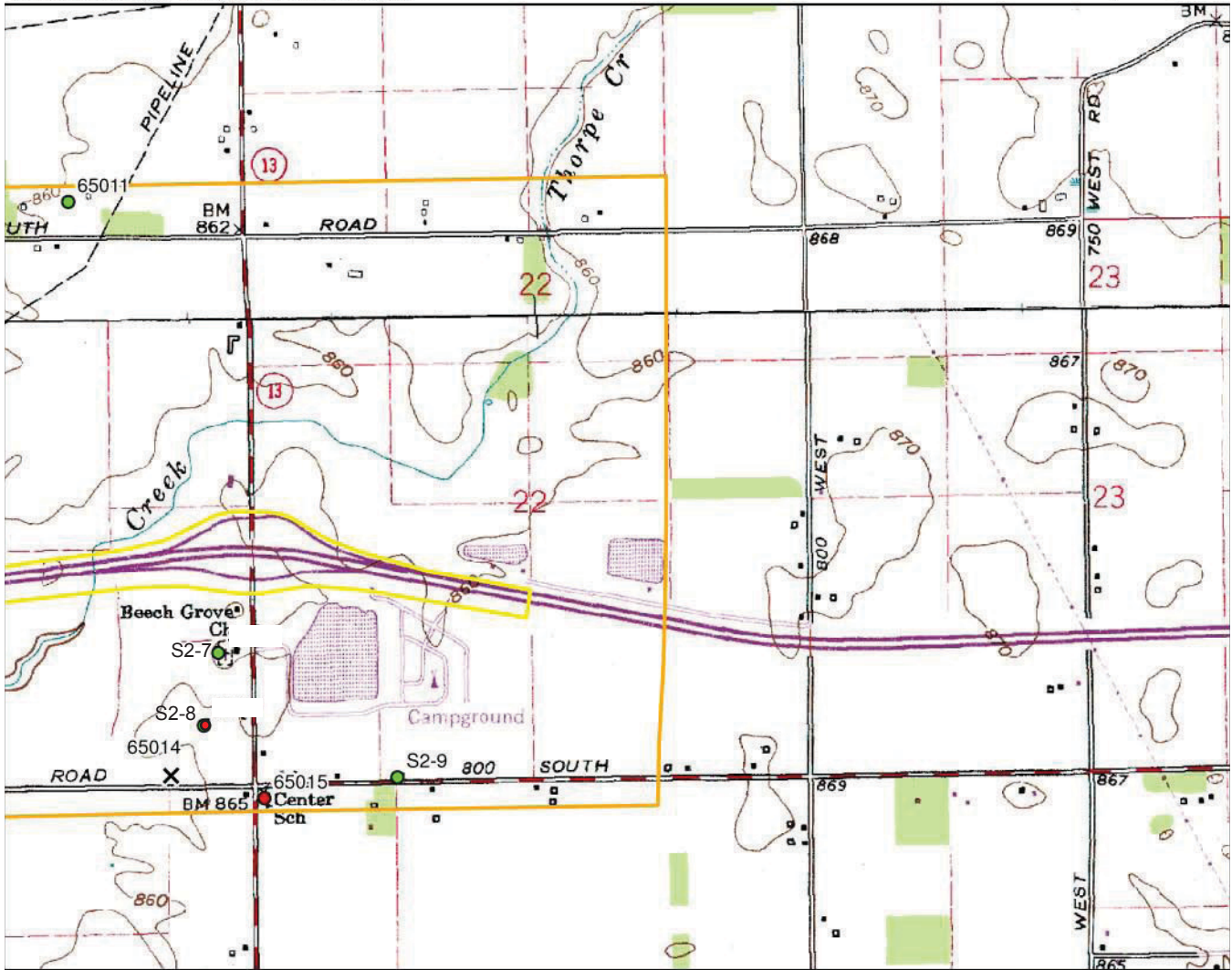


**WEINTRAUT & ASSOCIATES, INC.**

Note: Information shown on this map is not warranted for accuracy or merchantability. GIS data used to create this map are from the best known sources existing at this time. However, experience shows that many national datasets are not all inclusive. Use of this map should be limited to planning, and should not replace field review or background checks with other sources. It is intended to serve as an aid in graphic representation only. This map does not represent a legal document.

I-69 Added Travel Lanes from 106th Street to State Road 13: Zoom-in Map 7  
 Delaware, Fall Creek, & Wayne Townships, Hamilton County, Indiana  
 Green Township, Madison County, Indiana  
 Des. Nos.: 1383332 & 1383336  
 Portion of the USGS 7.5' series McCordsville, Riverwood, Ingalls, Lapel,  
 and Fishers, Indiana Topographic Quadrangle

April 21, 2014



	Project Location
	APE
	Previously Determined NRHP-Eligible
	NRHP-Eligible
	Contributing Property
	No Longer Extant

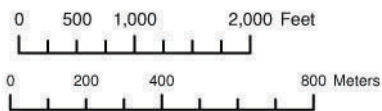
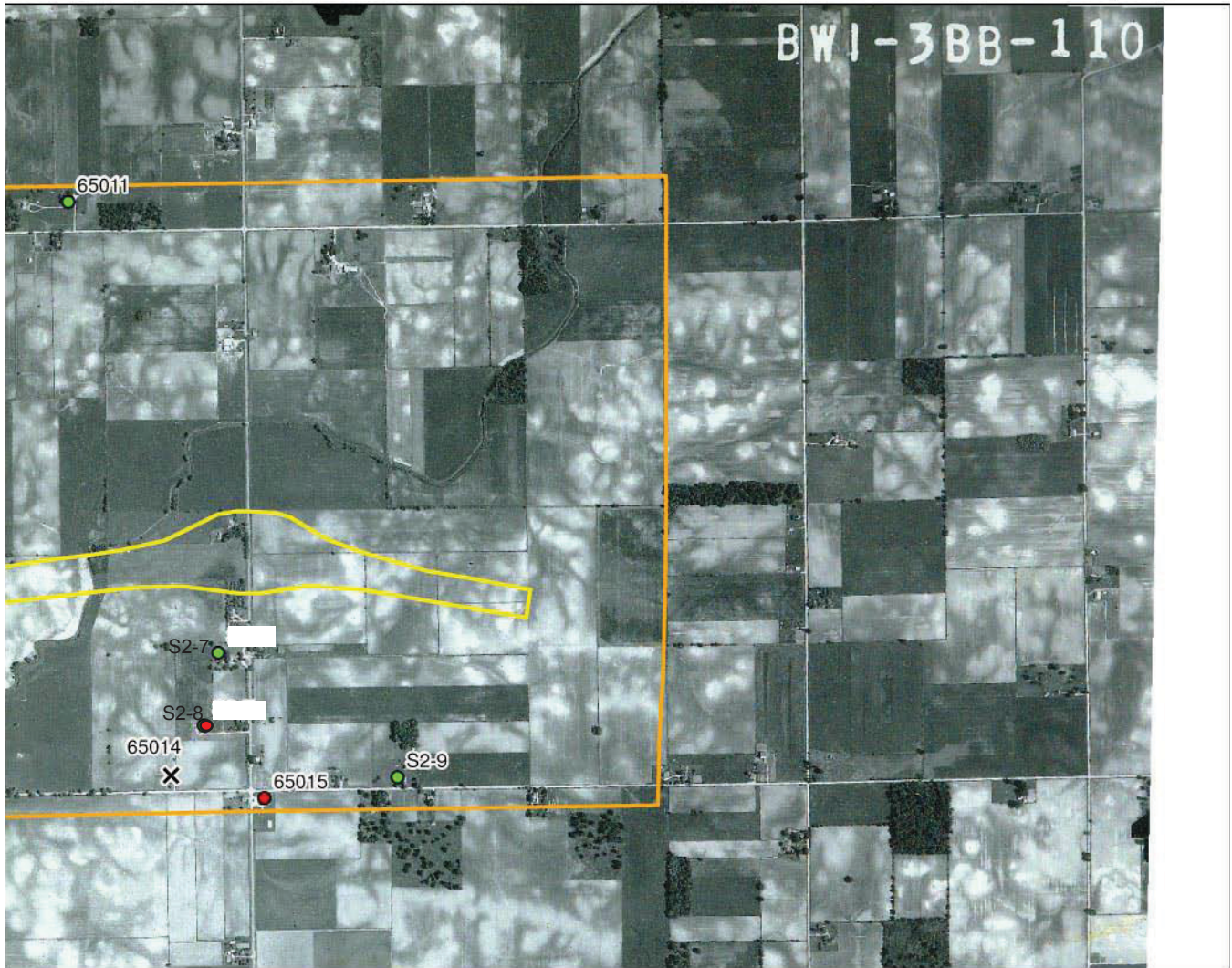


**WEINTRAUT & ASSOCIATES, INC.**

Note: Information shown on this map is not warranted for accuracy or merchantability. GIS data used to create this map are from the best known sources existing at this time. However, experience shows that many national datasets are not all inclusive. Use of this map should be limited to planning, and should not replace field review or background checks with other sources. It is intended to serve as an aid in graphic representation only. This map does not represent a legal document.



April 21, 2014



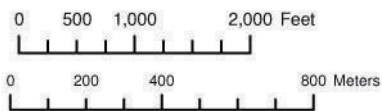
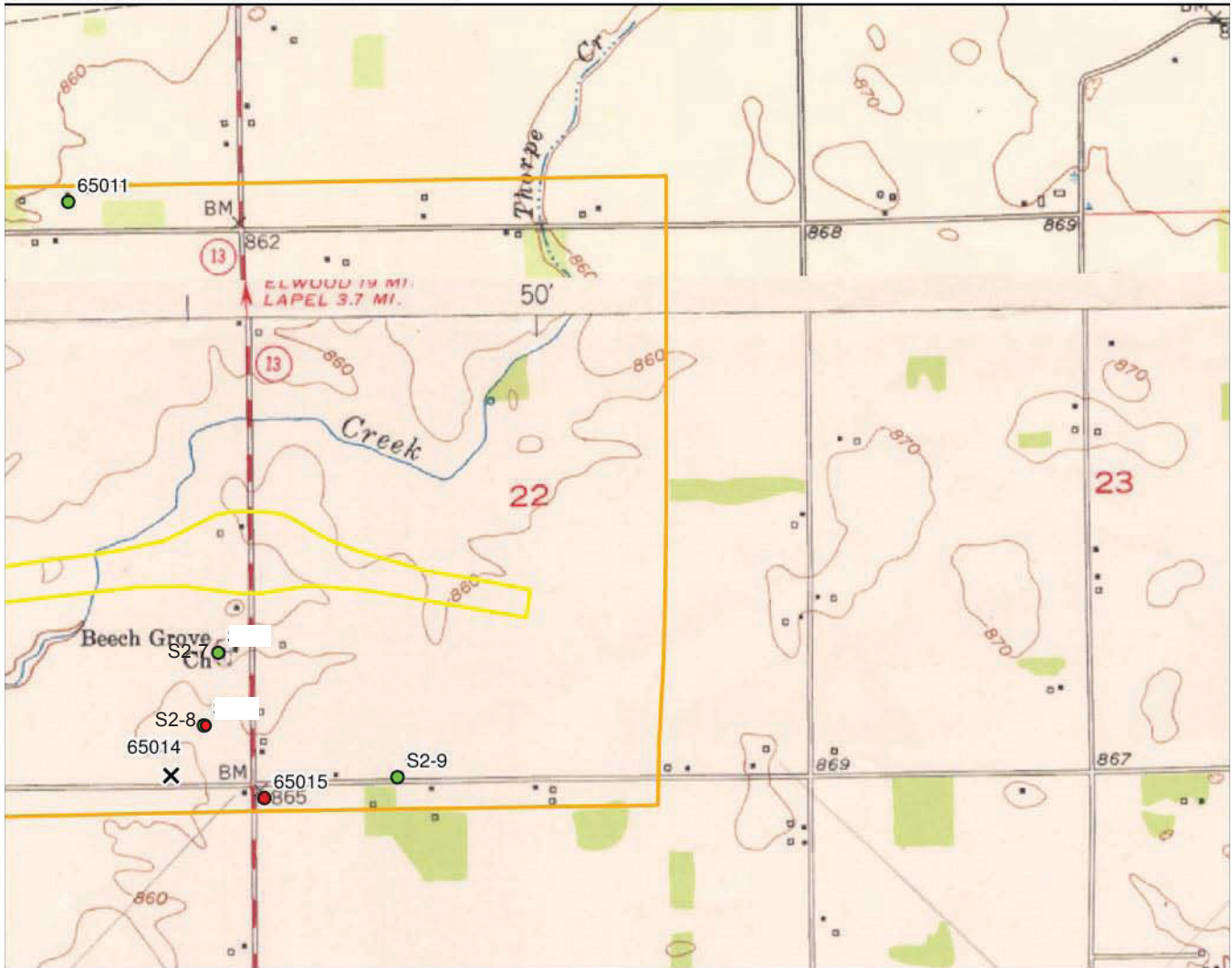
**WEINTRAUT & ASSOCIATES, INC.**

Note: Information shown on this map is not warranted for accuracy or merchantability. GIS data used to create this map are from the best known sources existing at this time. However, experience shows that many national datasets are not all inclusive. Use of this map should be limited to planning, and should not replace field review or background checks with other sources. It is intended to serve as an aid in graphic representation only. This map does not represent a legal document.

I-69 Added Travel Lanes from 106th Street to State Road 13: Zoom-in Map 7  
 Delaware, Fall Creek, & Wayne Townships, Hamilton County, Indiana  
 Green Township, Madison County, Indiana  
 Des. Nos.: 1383332 & 1383336  
 Portion of the USGS 7.5' series McCordsville 1962, Riverwood 1953, Ingalls 1952, Lapel 1953,  
 and Fishers 1952, Indiana Topographic Quadrangle



April 21, 2014



**WEINTRAUT & ASSOCIATES, INC.**

Note: Information shown on this map is not warranted for accuracy or merchantability. GIS data used to create this map are from the best known sources existing at this time. However, experience shows that many national datasets are not all inclusive. Use of this map should be limited to planning, and should not replace field review or background checks with other sources. It is intended to serve as an aid in graphic representation only. This map does not represent a legal document.

WEINTRAUT & ASSOCIATES, INC.

## **APPENDIX C. Consulting Party List**

## Parties Invited to Join Section 106 Consultation

Indiana State Historic Preservation Officer

Indiana Landmarks—Central Regional Office

Hamilton County Historian

Hamilton County Historical Society

Hamilton County Genealogy Society

Carmel-Clay Historical Society

Fishers Historic Preservation Committee

Noblesville Preservation Alliance

City of Noblesville

City of Fishers

Hamilton County Commissioners (Government)

Fishers Chamber of Commerce

Noblesville Chamber of Commerce

Madison County Historian

Madison County Historical Society

Madison County Commissioners

Hancock County Historical Society

Hancock County Historian

Indianapolis Metropolitan Planning Organization

Indiana Landmarks—Eastern Regional Office

Visit Hamilton County Indiana (Hamilton County Tourism Inc.)

 *Participating in Section 106 Consultation*

**Consulting Party Response: I-69 Added Travel Lanes from 106<sup>th</sup> Street to State Road 13**

You are hereby invited to be a consulting party. As a consulting party you will participate in consultation to identify and evaluate historic properties, assess effects, and resolve any adverse effects. Please complete and return this postcard. Check if you "do" or "do not" wish to be a consulting party for the following project. Thank you.  
We "do" wish to be a consulting party for:

I-69 Added Travel Lanes from 106<sup>th</sup> Street to State Road 13

We "do not" wish to be a consulting party

Name STEPHEN T. JACKSON  
Organization MARION COUNTY HISTORIAN  
Address 2417 SAGAMORE DRIVE  
ANDERSON, INDIANA 46011-9739  
Telephone Number \_\_\_\_\_ Fax \_\_\_\_\_  
E-mail Address \_\_\_\_\_

RECEIVED JUL 28 2014

**Consulting Party Response: I-69 Added Travel Lanes from 106<sup>th</sup> Street to State Road 13**

You are hereby invited to be a consulting party. As a consulting party you will participate in consultation to identify and evaluate historic properties, assess effects, and resolve any adverse effects. Please complete and return this postcard. Check if you "do" or "do not" wish to be a consulting party for the following project. Thank you.  
We "do" wish to be a consulting party for:

I-69 Added Travel Lanes from 106<sup>th</sup> Street to State Road 13

We "do not" wish to be a consulting party

Name Joseph A. Skuarenina  
Organization HANCOCK COUNTY HISTORIAN  
Address 523 N. SPENCER ST  
GREENFIELD IN 46140  
Telephone Number 317-518-1487 Fax \_\_\_\_\_  
E-mail Address skuar@notmail.com

RECEIVED AUG 07 2014

**Consulting Party Response: I-69 Added Travel Lanes from 106<sup>th</sup> Street to State Road 13**

You are hereby invited to be a consulting party. As a consulting party you will participate in consultation to identify and evaluate historic properties, assess effects, and resolve any adverse effects. Please complete and return this postcard. Check if you "do" or "do not" wish to be a consulting party for the following project. Thank you.

We "do" wish to be a consulting party for:

I-69 Added Travel Lanes from 106<sup>th</sup> Street to State Road 13

We "do not" wish to be a consulting party

Name RAINA REGAN  
Organization INDIANA LANDMARKS  
Address 1201 CENTRAL AVE  
INDIANAPOLIS, IN 46202  
Telephone Number 317 639 4534 Fax \_\_\_\_\_  
E-mail Address rregan@indianalandmarks.org

RECEIVED  
OCT 21 2014

**Consulting Party Response: I-69 Added Travel Lanes from 106<sup>th</sup> Street to State Road 13**

You are hereby invited to be a consulting party. As a consulting party you will participate in consultation to identify and evaluate historic properties, assess effects, and resolve any adverse effects. Please complete and return this postcard. Check if you "do" or "do not" wish to be a consulting party for the following project. Thank you.

We "do" wish to be a consulting party for:

I-69 Added Travel Lanes from 106<sup>th</sup> Street to State Road 13

We "do not" wish to be a consulting party

Name Jim Neal  
Organization HAMILTON COUNTY  
Address 1700 S. 10<sup>th</sup> ST, NOBLESVILLE, IN 46060  
Telephone Number 317-773-7770 Fax 317-776-9814  
E-mail Address james.neal@hamiltoncounty.in.gov

RECEIVED  
OCT 21 2014

**Consulting Party Response: I-69 Added Travel Lanes from 106<sup>th</sup> Street to State Road 13**

You are hereby invited to be a consulting party. As a consulting party you will participate in consultation to identify and evaluate historic properties, assess effects, and resolve any adverse effects. Please complete and return this postcard. Check if you "do" or "do not" wish to be a consulting party for the following project. Thank you.  
We "**do**" wish to be a consulting party for:

- I-69 Added Travel Lanes from 106<sup>th</sup> Street to State Road 13  
 We "**do not**" wish to be a consulting party

Name J.P. Hall  
Organization Indiana Landmarks  
Address PO Box 284  
Cambridge City, IN  
Telephone Number \_\_\_\_\_ Fax \_\_\_\_\_  
E-mail Address jphall@indianalandmarks.org

RECEIVED AUG 22

**Consulting Party Response: I-69 Added Travel Lanes from 106<sup>th</sup> Street to State Road 13**

You are hereby invited to be a consulting party. As a consulting party you will participate in consultation to identify and evaluate historic properties, assess effects, and resolve any adverse effects. Please complete and return this postcard. Check if you "do" or "do not" wish to be a consulting party for the following project. Thank you.  
We "**do**" wish to be a consulting party for:

- I-69 Added Travel Lanes from 106<sup>th</sup> Street to State Road 13  
 We "**do not**" wish to be a consulting party

Name Commissioner Steffanie L. Owens  
Organization Madison County Commissioner  
Address Madison County Court House  
Anderson, IN  
Telephone Number 765-610-9470 Fax 765-641-9578  
E-mail Address sowens@madisoncounty.in.gov

RECEIVED AUG 26

**Consulting Party Response: I-69 Added Travel Lanes from 106<sup>th</sup> Street.  
to State Road 13**

You are hereby invited to be a consulting party. As a consulting party you will participate in consultation to identify and evaluate historic properties, assess effects, and resolve any adverse effects. Please complete and return this postcard. Check if you "do" or "do not" wish to be a consulting party for the following project. Thank you.

We "do" wish to be a consulting party for:

I-69 Added Travel Lanes from 106<sup>th</sup> Street to State Road 13

We "do not" wish to be a consulting party

Name Brenda Myers

Organization Hamilton County Tourism Inc.

Address 37E Main St

Camel, IN 46032

Telephone Number 317-848-3181, x28 Fax 317-848-3191

E-mail Address 312

bmyers@hamiltoncountytourism.com

RECEIVED  
JUN 29

**Consulting Party Response: I-69 Added Travel Lanes from 106<sup>th</sup> Street to State Road 13**

You are hereby invited to be a consulting party. As a consulting party you will participate in consultation to identify and evaluate historic properties, assess effects, and resolve any adverse effects. Please complete and return this postcard. Check if you "do" or "do not" wish to be a consulting party for the following project. Thank you.  
We "do" wish to be a consulting party for:

I-69 Added Travel Lanes from 106<sup>th</sup> Street to State Road 13

We "do not" wish to be a consulting party

Name Diane Nevitt  
Organization NAM. Co. Historical Soc  
Address P.O. Box 397  
Noblesville IN 46061  
Telephone Number 317-770-0775 Fax SAME  
E-mail Address hamiltonmuseum@ATT.net

RECEIVED JUL 28 2014

**Consulting Party Response: I-69 Added Travel Lanes from 106<sup>th</sup> Street to State Road 13**

You are hereby invited to be a consulting party. As a consulting party you will participate in consultation to identify and evaluate historic properties, assess effects, and resolve any adverse effects. Please complete and return this postcard. Check if you "do" or "do not" wish to be a consulting party for the following project. Thank you.  
We "do" wish to be a consulting party for:

I-69 Added Travel Lanes from 106<sup>th</sup> Street to State Road 13

We "do not" wish to be a consulting party

Name Katherine Dill  
Organization Carmel Clay Hist Soc  
Address 211 1st Street SW  
Carmel  
Telephone Number \_\_\_\_\_ Fax \_\_\_\_\_  
E-mail Address \_\_\_\_\_

RECEIVED AUG 8 2014

## **APPENDIX D. Photos**



Street East of USA Parkway looking south



Street at Exit 5 Parkway looking east



Street at Cumberland Road looking west



Street at Cumberland Road looking east



Street at Cumberland Road looking south



Street at Cumberland Road looking west



6th Street at SR 37 looking north



6th Street at SR 37 looking south



Street at Cumberland Road looking east



Street at Cumberland Road looking east



1st Street at Norell Road looking north



1st Street at Norell Road looking south



15839 136th Street north elevation



Immanuel Brethren Church and school



13151 Cyntheanne Road east elevation



51 Cyntheanne Road south and west elevations



106th Street House north elevation



106th Street House south elevation



0019 106th Street north elevation



479 Lantern Road east and north elevations



1425 Lantern Road east and north elevations



711393 Lantern Road east elevation



9312 W 700 S House south and east elevations



0010 S 9312 W 700 S House south elevation



015 8791 W 800 S east elevation



015 8791 W 800 S north and east elevations



015 8791 W 800 S south and east elevations



015 8791 W 800 S south and east elevations



015 8791 W 800 S south and east elevations



015 8791 W 800 S south and east elevations



015 8791 W 800 S west elevation



015 8791 W 800 S west elevation



1930 Center School



1961 Aerial view of Center School



Center School east elevation



Center School\_W elevation



Looking NE across SR 13 to Cen



School Road looking S to 136t



rive at South Street looking N



Point Boulevard looking N to 106



Looking SE to I-69 from 1165t



oad at Clay Prairie Parkway Ic



ad at Fishers Pointe Boulevard



ad at Fishers Pointe Boulevard



rn Road at Morgan Drive looki



rn Road at South Street looki



rive at Fishers Point Boulevard



rive at Fishers Point Boulevard



th Street at Promise Road Lo



Reynolds Drive looking N



oad\_11325 Lantern Road\_S a



h Road\_8882 Birch Road\_S e



h Road\_8885 Birch Road\_S e



ch Road\_8936 Birch Road\_S



rn Road\_11374 Lantern Road



oad\_11374 Lantern Road W



rn Road\_11401 Lantern Road\_



rn Road\_11413 Lantern Road\_



oad\_11478 Lantern Road Ne



n Street\_14790 E. 136th Stree



2\_Burk(Burke) Cemetery\_Stor



emetery\_Stone 2 and old road w



emetery\_Stone 2 and old road



k(Burke) Cemetery\_Stone 2\_I



77\_east elevation south abutr



ridge 177\_east elevation\_look



177\_underside of deck N span



h Street\_15678 136th Street\_



n Street\_16392 E 146th Street



reet\_16392 E 146th Street (W



Bridge Deck at Thorpe Cree



SR 13 SR 13\_front elevation\_loc



SR 13 SR 13\_south elevation\_lo



Beech Grove Cemetery\_looking NE fr



Beech Grove Cemetery\_looking SW fr



SR 13 SR 13\_Beech Grove Ceme



SR 13\_Beech Grove Cemetery\_Lc



SR 13 SR 13\_800 S\_8722 W 800 S\_S elev



Technology Drive looking W



Technology Drive Looking NE to 11100 US



Looking S from 11100 USA Parkway



Technology Drive Looking SW from 11100 US



13951 E. 136th Street



Technology Drive at Melrose Circle looki

# **APPENDIX E. Report Summaries**



**Historic Property Report**  
**I-69 Added Travel Lanes from 106<sup>th</sup> Street to State Road 13**  
**Delaware, Fall Creek, and Wayne Townships, Hamilton County**  
**and Green Township, Madison County, Indiana**  
**DES Nos.: 1383332 & 1383336**

Prepared for  
**Indiana Department of Transportation/  
Federal Highway Administration**

Prepared by  
**WEINTRAUT & ASSOCIATES, INC.**  
Principal Investigator: Dr. Linda Weintraut  
Authors: Bethany Natali, M.A., and Kelly Lally Molloy, M.A.

P.O. Box 5034  
Zionsville, Indiana 46077  
317.733.9770  
Linda@weintrautinc.com

May 2014

# **I-69 Added Travel Lanes from 106<sup>th</sup> to State Road 13 | Delaware, Fall Creek, and Wayne Townships, Hamilton County and Green Township, Madison County, Indiana | Des Nos.: 1383332 & 1383336 | Executive Summary:**

---

The Indiana Department of Transportation (INDOT) is planning an I-69 Interstate Expansion Project from 106<sup>th</sup> Street in Fishers to Exit 226 [State Roads (SR) 9 & 109 in Anderson], in Hamilton and Madison counties. The project has been broken into segments with independent utility and logical termini. The need for these projects stems from traffic congestion issues that currently exist on these segments of I-69. The purpose of these projects is to improve overall traffic operation by reducing congestion on this segment of I-69. This report identifies and evaluates historic properties for the following segments: Project 1 (Des. No. 1383332) from 106<sup>th</sup> Street to 0.5 miles north of Campus Parkway and Project 3 (Des. No. 1383336) from 0.5 miles north of Campus Parkway to 0.5 mi east of SR 13.

The Area of Potential Effects (APE) is “the geographic area or areas within which an undertaking may directly or indirectly cause alterations in the character or use of historic properties, if any such properties exist.” [36 CFR § 800.16(d)] The APE was drawn to include properties that may be impacted by project activities. (See Appendix 1: Maps.)

Project personnel for Weintraut & Associates, Inc. (W&A), who meet the Secretary of the Interior’s Professional Standards and who are historians listed as Qualified Professionals by the Indiana Department of Natural Resources (IDNR), Indiana Division of Historic Preservation & Archaeology (DHPA), identified and evaluated resources for this project.

As a result of Section 106 identification and evaluation efforts, historians identified one property that the staff of the State Historic Preservation Officer has previously agreed is eligible for listing in the National Register of Historic Places: Flanagan House (057-206-50019). (See Appendix 5: Additional Information.)

Historians for W&A identified two additional properties that they are recommending as eligible for inclusion in the National Register of Historic Places: Hamilton County Bridge No. 177 (S2-3) and Center School (095-343-65015).



**Indiana Archaeological Short Report**  
**I-69 Added Travel Lanes in Hamilton and Madison Counties, Indiana**  
**Des. Nos.: 1383332 & 1383336**

Prepared for  
**Indiana Department of Transportation / Federal Highway Administration**

Prepared by  
**WEINTRAUT & ASSOCIATES, INC.**

Principal Investigator: Jason Goldbach, M.A., R.P.A.

P.O. Box 5034

Zionsville, Indiana

(317) 733-9770

(Jason@weintrautinc.com)

September 3, 2014



# INDIANA ARCHAEOLOGICAL SHORT REPORT

State Form 54566 (1-11)

INDIANA DEPARTMENT OF NATURAL RESOURCES  
DIVISION OF HISTORIC PRESERVATION  
AND ARCHAEOLOGY

402 West Washington Street, Room W274  
Indianapolis, Indiana 46204-2739  
Telephone Number: (317) 232-1646  
Fax Number: (317) 232-0693  
E-mail: dhpa@dnr.IN.gov

Where applicable, the use of this form is recommended but not required by the Division of Historic Preservation and Archaeology.

Author: Jason Goldbach

Date (month, day, year): September 3, 2014

Project Title: I-69 Added Travel Lanes in Hamilton and Madison Counties, Indiana

## PROJECT OVERVIEW

The Federal Highway Administration (FHWA) and the Indiana Department of Transportation (INDOT) are planning an I-69 Interstate Expansion from 106th Street in Fishers to Exit 226 (State Roads [SR] 9 & 109 in Anderson), in Hamilton and Madison Counties. This expansion has been broken into multiple projects with independent utility and logical termini. This report is being conducted for Project 1 (Des. No.: 1383332), from 106th Street to 0.5 mile (mi) north of Campus Parkway, and Project 3 (Des. No.: 1383336), from 0.5 mi north of Campus Parkway to 0.5 mi east of SR 13. The need for these projects stems from traffic congestion issues that currently exist on these segments of I-69. The purpose of these projects is to improve overall traffic operation by reducing congestion on this segment of I-69.

The existing cross section of I-69 from Exit 205 to 0.5 mi east of SR 13 has two travel lanes in each direction. The northbound cross section of three lanes in each direction ends at Cumberland Road. The southbound three-lane section starts with the southbound SR 37 ramps. A pavement resurfacing project (Des. No.: 0900053) has recently been completed for this segment of I-69. The pavement condition in this area will be determined by INDOT Pavement Design, and the ultimate decision on the future form of the roadway will depend on the condition of the pavement.

Project Description:

Project 1: I-69 from 106th Street to 0.5 mi North of Campus Parkway, Hamilton County  
The project would construct additional lanes from Exit 205 (116th Street and SR 37 in Fishers) to Exit 210 (Campus Parkway) in the form of median travel lanes. An outside auxiliary lane would be added on Southbound (SB) I-69 from 106th Street to 116th Street. Existing pavement would be resurfaced. The cross section would have a 12-foot (ft) paved inside shoulder and a 10-ft paved outside shoulder. Double-sided guardrail would be installed. All mainline bridges would be widened in the median. The overhead structure at Cumberland Road would receive minor joint improvements, while the structure at Brooks School Road may be replaced. The overhead structure at 126th Street would require no additional work. The interchange at Exit 210 would be modified as part of a separate project (Project 2). All small structures will be evaluated to determine if rehabilitation or replacement is necessary. Detention would likely be required at all legal drains. All detention basins would be constructed within existing right-of-way.

Project 3: I-69 from 0.5 mi North of Campus Parkway to 0.5 mi East of SR 13, Hamilton and Madison Counties. The project would construct additional lanes from Exit 210 (Campus Parkway) to SR 13 in the form of median travel lanes. Existing pavement would be resurfaced. The cross section would have a 12-ft paved inside shoulder and a 10-ft paved outside shoulder. Double-sided guardrail would be installed in most areas, though not in wide median areas. All mainline bridges would be widened in the median. The overhead structure at Olio Road would require no additional work. The overhead structure at Cynthianne Road may be replaced due to horizontal clearance. The SR 13 interchange will be evaluated to determine if additional auxiliary lanes (within existing right-of-way) would be necessary. All small structures will be evaluated to determine if rehabilitation or

**FIELD INVESTIGATION:** (check all that apply)

Field Investigation Date(s) (month, day, year):

Field Supervisor:

Field Crew:

Surface Visibility:

Factors Affecting Visibility:

Visual Walkover  Pedestrian Survey  Shovel Test  Screened  Mesh Size

Interval 5 m  10 m  15 m  Other (describe below)

Number of Shovel Test Units Excavated:

Describe Methods:

*Attach photographs documenting disturbances below*

Describe Disturbances:

Comments:

**RESULTS**

Archaeological records check has determined that the project area does not have the potential to contain archaeological resources.

Archaeological records check has determined that the project area has the potential to contain archaeological resources.

Phase Ia reconnaissance has located no archaeological resources in the project area.

Phase Ia reconnaissance has identified landforms conducive to buried archaeological deposits.

Actual Area Surveyed hectares:  acres:

Comments:

**RECOMMENDATION**

The archaeological records check has determined that the project area has the potential to contain archaeological resources and a Phase Ia archaeological reconnaissance is recommended.

The archaeological records check has determined that the project area does not have the potential to contain archaeological resources and no further work is recommended before the project is allowed to proceed.

The Phase Ia archaeological reconnaissance has located no archaeological sites within the project area and it is recommended that the project be allowed to proceed as planned.

The Phase Ia archaeological reconnaissance has determined that the project area includes landforms which have the potential to contain buried archaeological deposits. It is recommended that Phase Ic archaeological subsurface reconnaissance be conducted before the project is allowed to proceed.

The Phase Ia archaeological reconnaissance has determined that the project area is within 100 feet of a cemetery and a Cemetery Development Plan is required per IC-14-21-1-26.5.

# **APPENDIX F. Correspondence**

# WEINTRAUT & ASSOCIATES, INC.

July 24, 2014

State Historic Preservation Officer  
Attn: Mitch Zoll  
Indiana Department of Natural Resources  
Division of Historic Preservation and Archaeology  
402 W. Washington Street, W274  
Indianapolis, IN 46204-2739

**Re:** INDOT Designation Nos: 1383332 & 1383336

**Location:** Delaware, Fall Creek, and Wayne Townships in Hamilton County, Indiana & Green Township in Madison County, Indiana

**Description:** I-69 Interstate Expansion; Project 1 (from 106<sup>th</sup> St to 0.5 mi N of Campus Parkway) & Project 3 (from 0.5 mi N of Campus Parkway to 0.5 mi East of SR 13)

Dear Mitch Zoll,

The Federal Highway Administration (FHWA) and the Indiana Department of Transportation (INDOT) are planning an I-69 Interstate Expansion from 106<sup>th</sup> St in Fishers to Exit 226 (State Roads [SR] 9 & 109 in Anderson), in Hamilton and Madison Counties. This expansion has been broken into multiple projects with independent utility and logical termini. This report is being conducted for Project 1 (Des. No.: 1383332) from 106<sup>th</sup> Street to 0.5 mile north of Campus Parkway and Project 3 (Des. No.: 1383336) from 0.5 mile north of Campus Parkway to 0.5 mile east of SR 13. We are requesting comments from your area of expertise regarding any possible environmental effects associated with this project. **Please use the above designation numbers and description in your reply. We will incorporate your comments into a study of the projects' environmental impacts.**

**Purpose and Need:** The need for these projects stems from traffic congestion issues that currently exist on these segments of I-69. Traffic data was analyzed using Highway Capacity Manual methodology in Highway Capacity Software (HCS). The data was collected by INDOT in 2011, and a 1.5% per year growth rate was applied to forecast the traffic for 2013 ("current year") and 2033 ("design year"). The adjusted and balanced data was then used to produce results in Level of Service (LOS). LOS is a rating for traffic congestion with LOS A being the least delay and LOS F being the most delay. I-69 between Exit 205 and SR 38 is currently operating at LOS E, which is characterized as "unstable flow". In 2033, I-69 from Exit 205 to SR 13 is predicted to experience "forced flow" (LOS F). This is likely to appear in the form of queuing upstream of ramp junctions (southbound at SR 13 in the AM peak hours and northbound at Exit 210 in the PM peak hours). I-69 is considered to be urban to Exit 210 from the south and rural from Exit 210 to the north, which means the minimally acceptable LOS's are D and C, respectively. The results show unacceptable LOS for both existing and future traffic in each direction for this section of I-69.

The purpose of these projects is to improve overall traffic operation by reducing congestion on this segment of I-69.

**Existing Conditions:** The existing cross section of I-69 from Exit 205 to 0.5 mi east of SR 13 has two travel lanes in each direction. The northbound cross section of three lanes in each direction ends at

Cumberland Road. The southbound three-lane section starts with the southbound SR 37 ramps. A pavement resurfacing project (Des. No.: 0900053) has recently been completed for this segment of I-69. The pavement condition in this area will be determined by INDOT Pavement Design, and the ultimate decision on the future form of the roadway will depend on the condition of the pavement.

**Proposed Projects:**

*Project 1: I-69 from 106<sup>th</sup> Street to 0.5 mi N of Campus Parkway, Hamilton County*

The project would construct additional lanes from Exit 205 (116<sup>th</sup> Street and SR 37 in Fishers) to Exit 210 (Campus Parkway) in the form of median travel lanes. An outside auxiliary lane would be added on Southbound (SB) I-69 from 106<sup>th</sup> Street to 116<sup>th</sup> Street. Existing pavement would be resurfaced. The cross section would have a 12-foot paved inside shoulder and a 10-foot paved outside shoulder. Double-sided guardrail would be installed. All mainline bridges would be widened in the median. The overhead structure at Cumberland Rd would receive minor joint improvements, while the structure at Brooks School Road may be replaced. The overhead structure at 126<sup>th</sup> Street would require no additional work. The interchange at Exit 210 would be modified as part of a separate project (Project 2). All small structures will be evaluated to determine if rehabilitation or replacement is necessary. Detention would likely be required at all legal drains. All detention basins would be constructed within existing right-of-way.

*Project 3: I-69 from 0.5 mi N of Campus Parkway to 0.5 mi East of SR 13, Hamilton and Madison Counties*

The project would construct additional lanes from Exit 210 to SR 13 in the form of median travel lanes. Existing pavement would be resurfaced. The cross section would have a 12-foot paved inside shoulder and a 10-foot paved outside shoulder. Double-sided guardrail would be installed in most areas, though not in wide median areas. All mainline bridges would be widened in the median. The overhead structure at Olio Road would require no additional work. The overhead structure at Cyntheanne Road may be replaced due to horizontal clearance. The SR 13 interchange will be evaluated to determine if additional auxiliary lanes (within existing right-of-way) would be necessary. All small structures will be evaluated to determine if rehabilitation or replacement is necessary. Detention would likely be required at all legal drains within Hamilton County. Detention is not expected to be required in Madison County. All detention basins would be constructed within existing right-of-way.

**Right-of-Way (ROW):** No new ROW would be required for Project 1 and Project 3.

**Section 106:** Section 106 of the National Historic Preservation Act requires federal agencies to take into account the effects of their undertaking on historic properties (both archaeological and structures). Pursuant to 36 CFR 800.2(c), you are hereby invited to be a consulting party to participate in efforts to identify historic properties that may be affected by the undertaking, assess the effects of the undertaking on historic properties, and seek ways to avoid, minimize, or mitigate adverse effects on historic properties. Historic Properties are properties that are listed or eligible for listing in the NRHP. The intent of this letter is to provide you an opportunity to become a consulting party by responding to the invitation via the enclosed post card.

The following individuals, agencies and organizations have been invited to be consulting parties:

- Indiana State Historic Preservation Officer
- Indiana Landmarks – Central Regional Office
- Hamilton County Historian

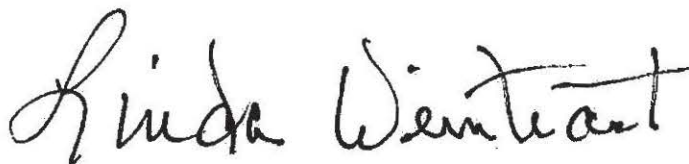
- Hamilton County Historical Society
- Hamilton County Genealogy Society
- Carmel-Clay Historical Society
- Fishers Historic Preservation Committee
- Noblesville Preservation Alliance
- City of Noblesville
- City of Fishers
- Hamilton County Commissioners
- Fishers Chamber of Commerce
- Noblesville Chamber of Commerce
- Madison County Historian
- Madison County Historical Society
- Madison County Commissioners
- Hancock County Historical Society
- Hancock County Historian
- Indianapolis MPO

Per 36 CFR 800.3(f), the State Historic Preservation Officer (SHPO) is requested to notify this office if the SHPO is aware of any other individuals, agencies, or organizations which may be "entitled to become consulting parties."

Enclosed with this letter is one copy of the Historic Property Report (HPR) prepared by Weintraut & Associates, Inc. for your review. The report was approved by the INDOT-Cultural Resources Office (CRO) on June 16, 2014. The staff of the SHPO has previously agreed that the Flanagan House (057-206-50019) on East 106<sup>th</sup> Street is eligible for listing in the National Register of Historic Places (NRHP). In addition, Weintraut & Associates is recommending two properties as eligible for listing in the NRHP: Center School (095-343-65015), at SR 13 & CR 800 S, and Hamilton County Bridge 177 (S2-3), which carries an abandoned portion of Prairie Baptist Road over Mud Creek. The results of the archaeological investigation will be forwarded to the SHPO for review and comment.

To facilitate the development of this project, please respond with your comments on the HPR **within thirty (30) days** from the date of receipt of this letter. Should you find that an extension to the response time is necessary, a reasonable amount may be granted upon request. Please direct comments to Linda Weintraut at the address below or via email at [Linda@weintrautinc.com](mailto:Linda@weintrautinc.com).

Sincerely,



Linda Weintraut, Ph.D.  
Weintraut & Associates, Inc.